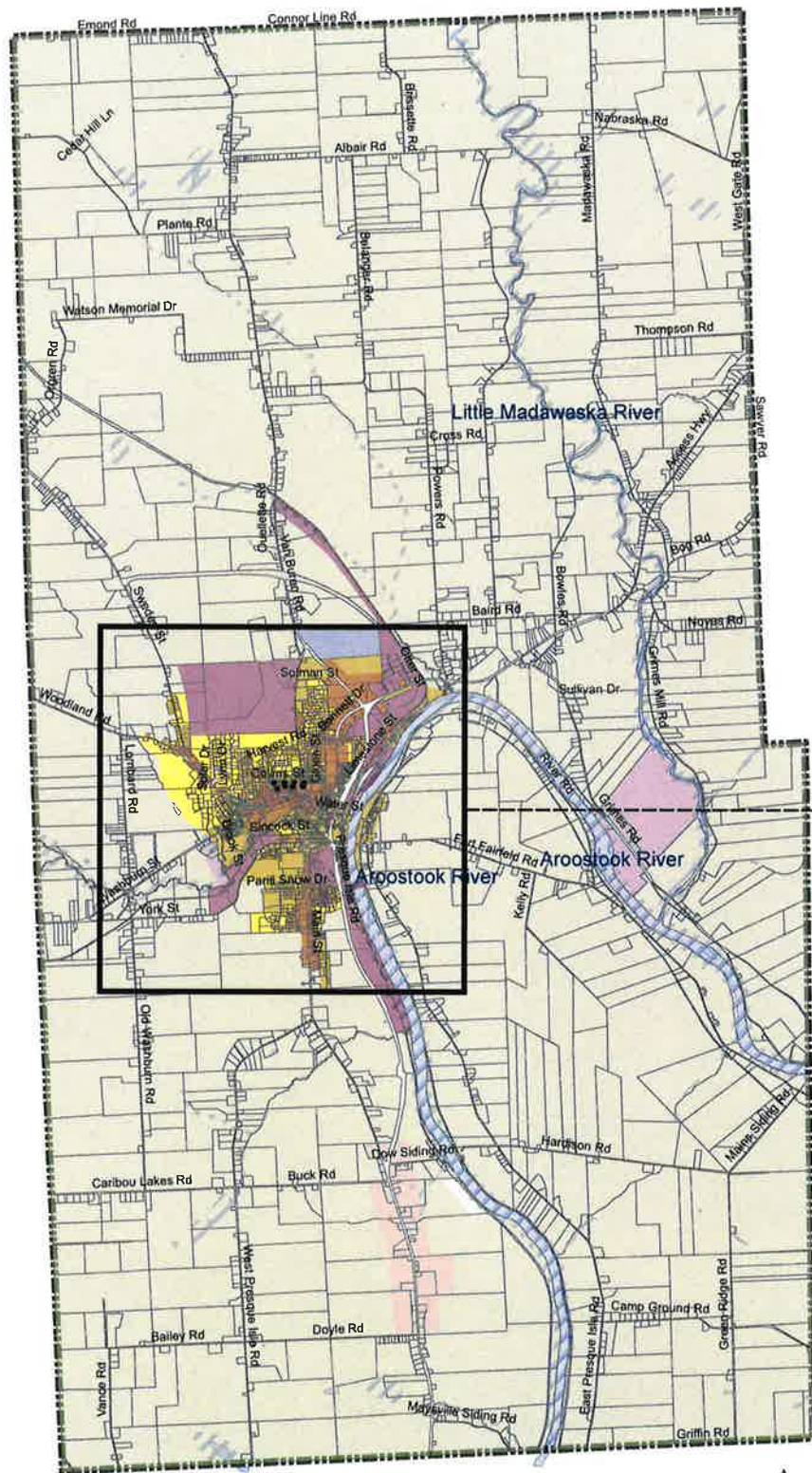


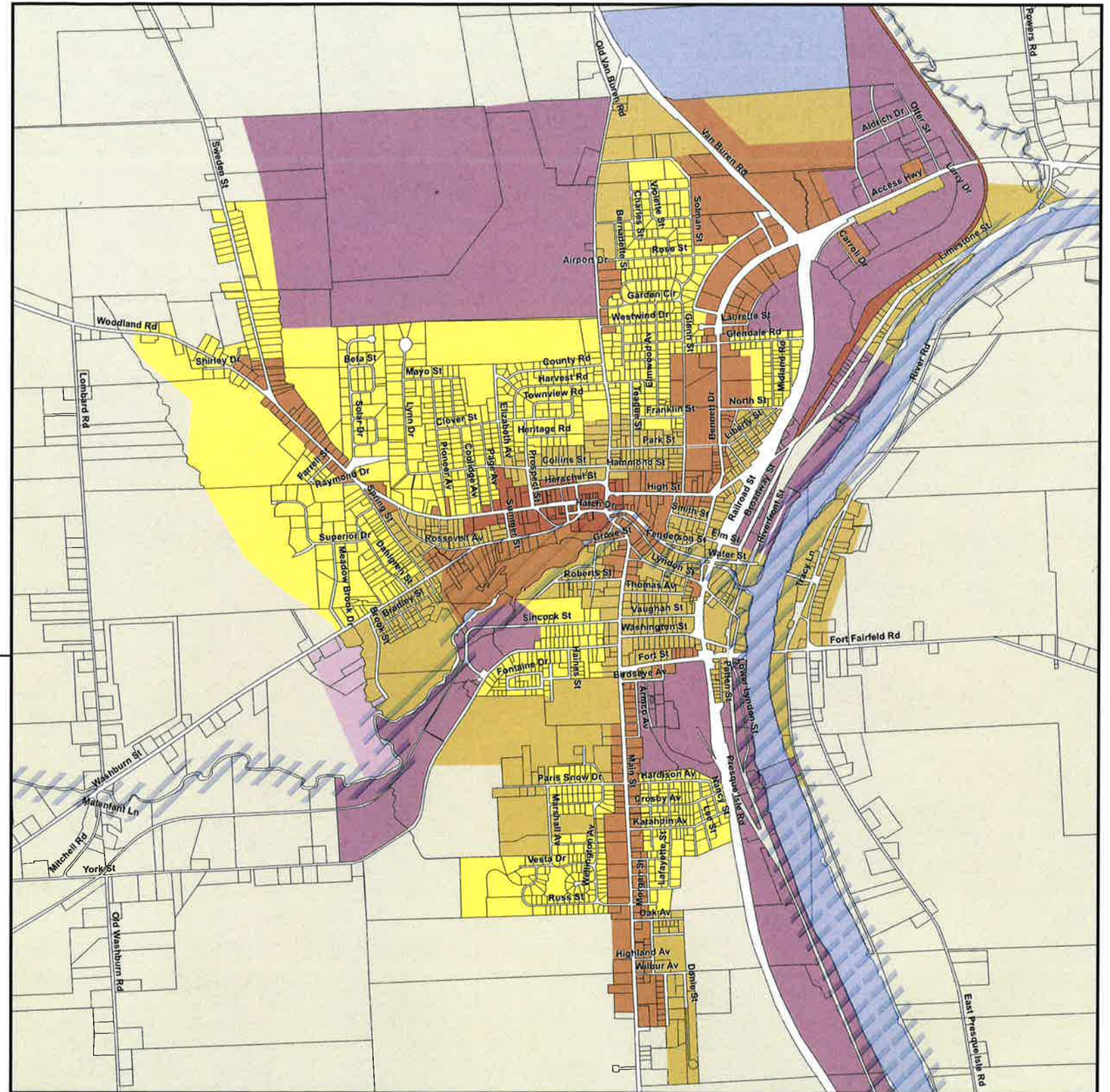
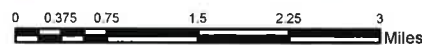


City of Caribou Official Zoning Map 2021



Legend

- Township Boundaries
- Caribou 2019 Update Final
- Rivers and Water Bodies
- Shoreland Zone
- Zoning Districts**
- C-1 Downtown Commercial
- C-2 General Commercial
- R-C2 Rural Commercial
- H-1 Hospital
- I-1 Light Industry
- I-2 Industry
- R-1 Residential Single Family
- R-2 Residential Mixed Housing
- R-3 Rural Mixed Housing



Produced: June 15, 2021, by Caribou Planning and Zoning Administrator
 Data: All data derived from Caribou GIS digital maps.
 Software: ESRI ArcMap 10.8

This map is for general reference purposes only. No warranty of data or representation of such relative to Real world conditions is given. Any questions or disputes about the information conveyed on this map should To Caribou City Planning and Zoning Administrator Office located at 25 High Street, Caribou, ME 04736.

2021 Map Amendments

By official action of the City, the following changes were made:

- Ordinance No. 1, 2021 Series adopted April 20, 2021, effective date May 20, 2021, rezoned approximately 50 acres on Sweden Street from R-1 to R-3
- Ordinance No. 12, 2021 Series adopted June 14, 2021, effective date July 14, 2021 rezoned approximately 1.3 acres Evergreen Parkway from I-1 to C-2

This is to certify that this is the Official Zoning Map of the Zoning Ordinance of the City of Caribou, Maine

By: Danielle Brissette Date: June 15, 2021
 City Clerk, Danielle Brissette