

The site plan illustrates the proposed development at the intersection of Fort Street and US Highway 1. The central feature is a 3-story public safety building, 38,059 sq ft total, with 2 stories above ground. To the north of the building is a 21,990 sq ft fire parking lot. To the south is a 10,990 sq ft fire parking lot and a 38,059 sq ft fire truck apron area. To the west of the building is a 26,990 sq ft public parking lot. To the east of the building is a 10,990 sq ft secure police parking lot and a 1,990 sq ft police parking lot. The plan also shows an existing building to be retained, a drive for future development, and a north arrow. The intersection is marked with a '2' and 'AS/LSU'.

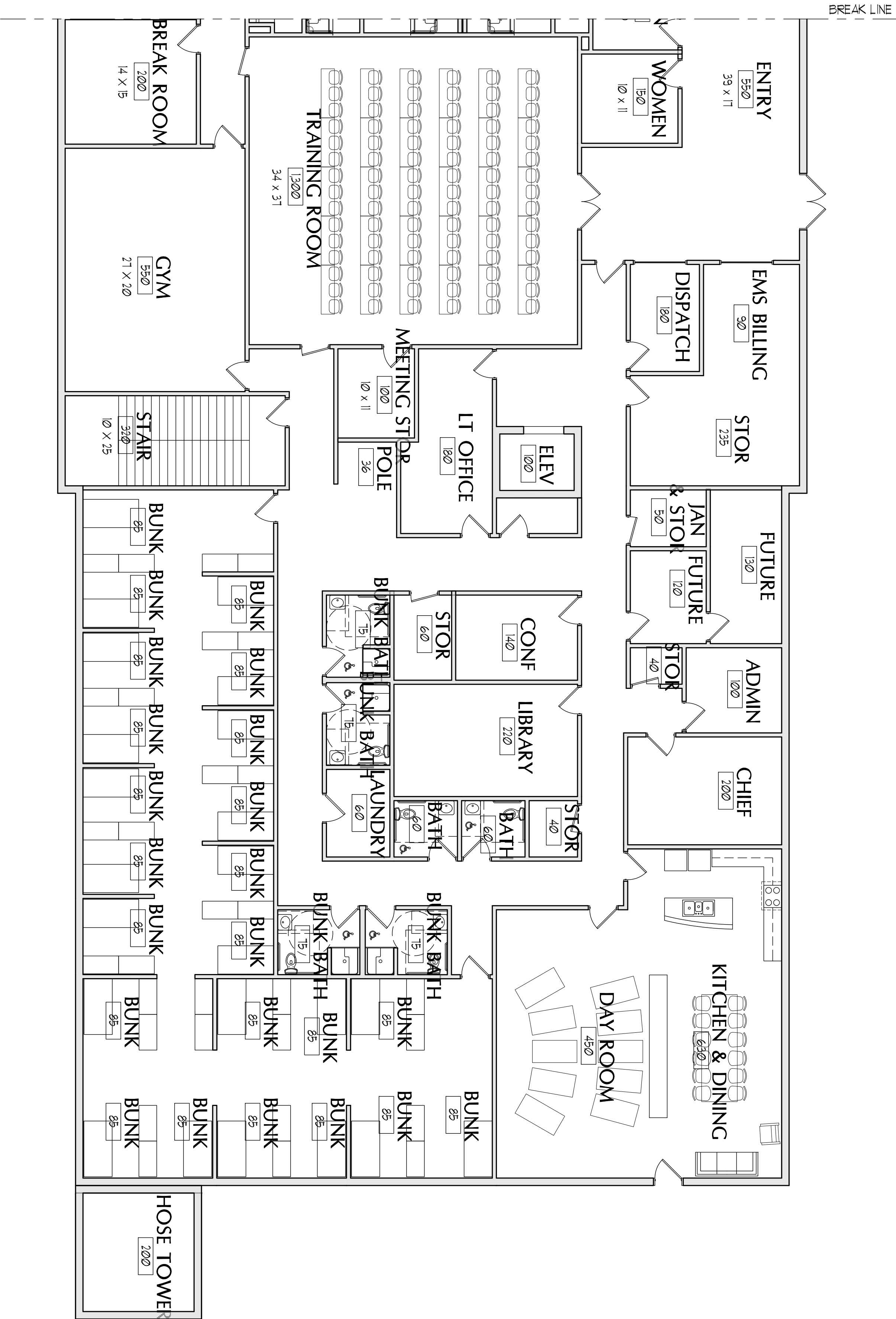
A-S1.1

CITY OF CARBON	
PUBLIC SAFETY	
BUILDING	
CARBON, MAINE	
Date Issued	September 16, 2018
Project Number	7411
Scale	

OPTION A

**CITY OF CARIBOU
PUBLIC SAFETY
BUILDING
CARIBOU, MAINE**

SITE PLAN

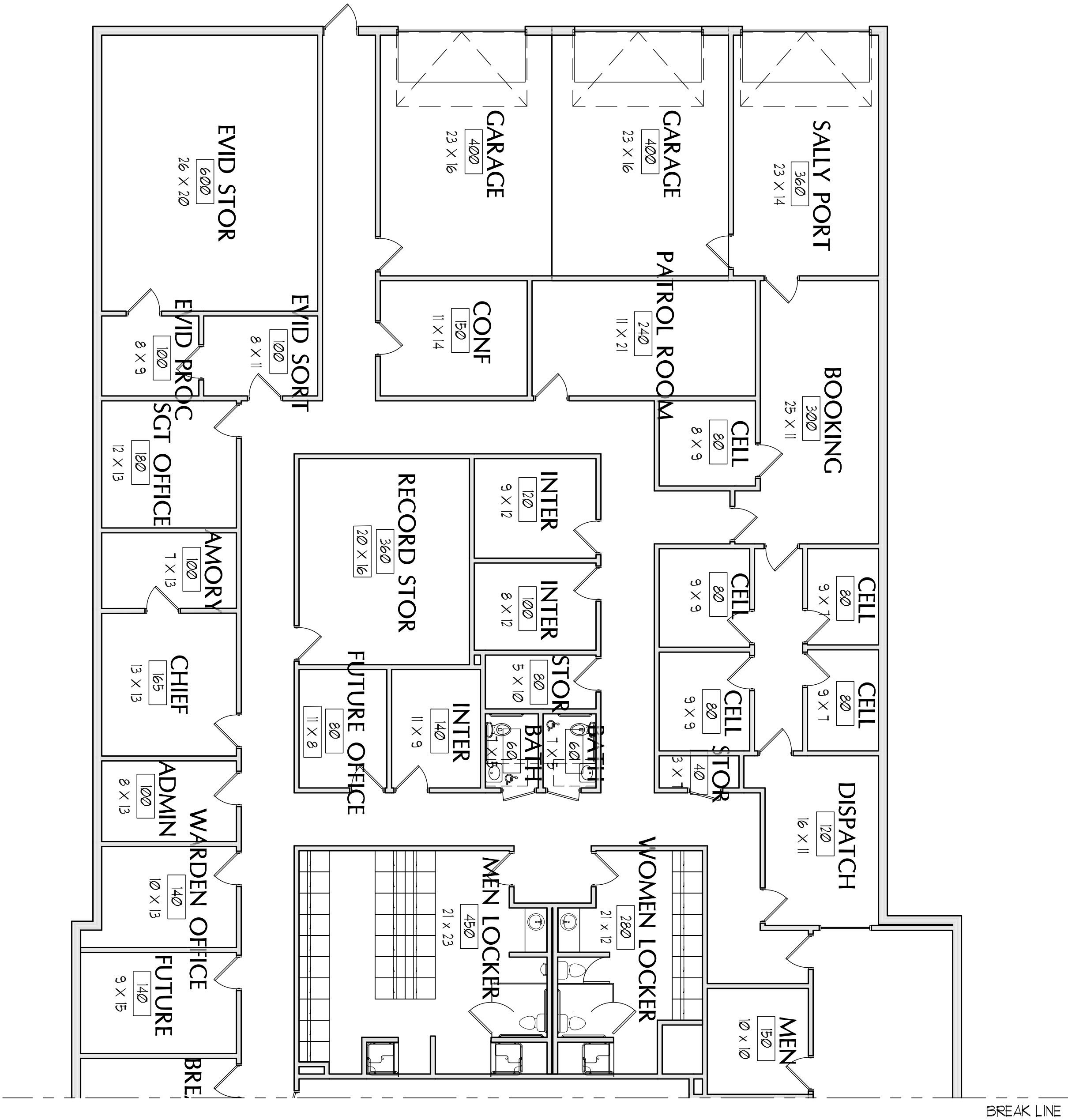


1
FIRST FLOOR - POLICE STATION
0 8'-0" 1/8" = 1'-0"

**CITY OF CARIBOU
PUBLIC SAFETY
BUILDING
CARIBOU, MAINE**

Date Issued	September 16, 2018
Project Number	17411
Scale	

Drawn By	A-A1.2
Iss	
Checked By	



1
FIRST FLOOR - POLICE STATION
0' 8' - 0"



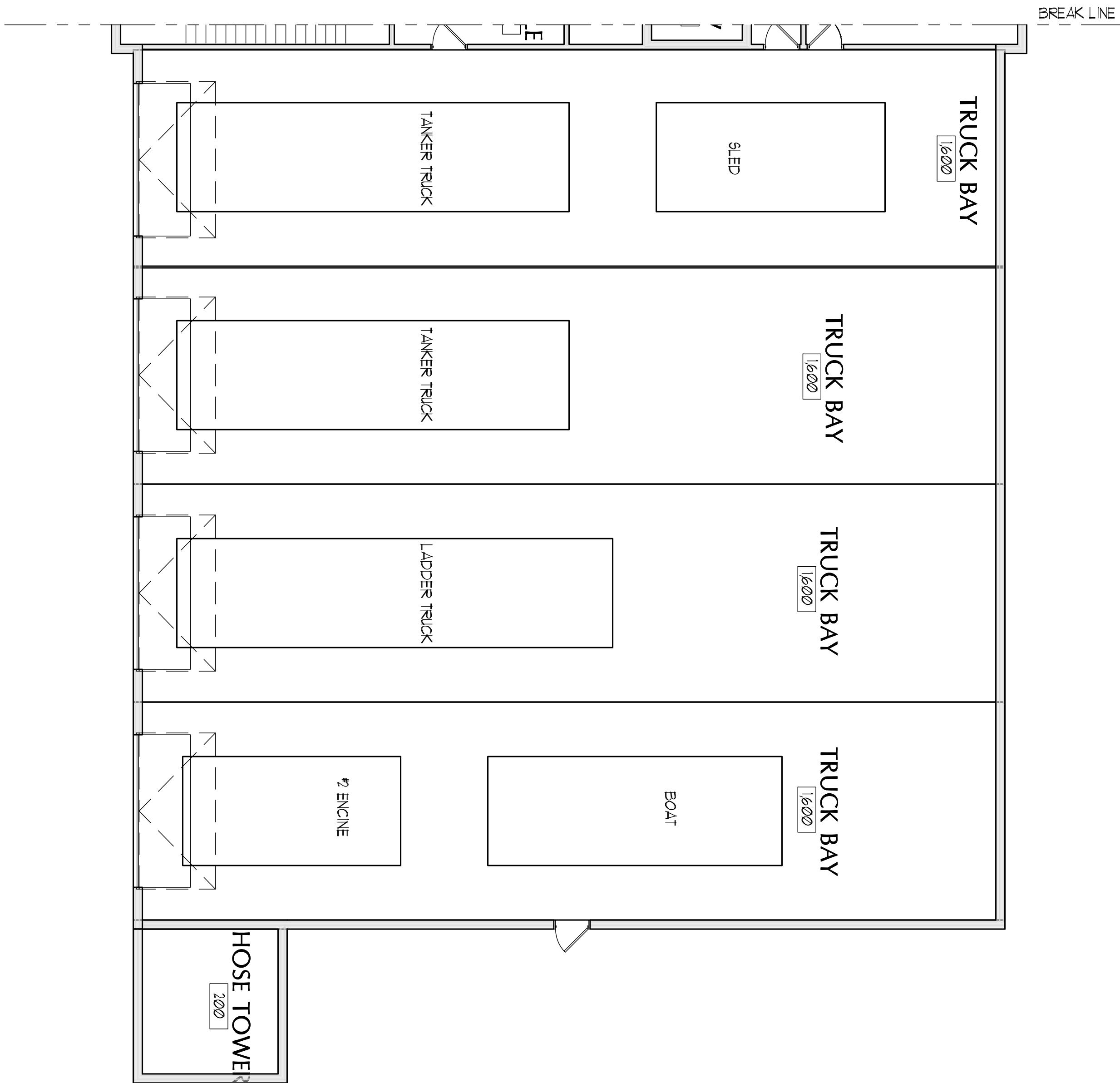
OPTION A

**CITY OF CARIBOU
PUBLIC SAFETY
BUILDING
CARIBOU, MAINE**

[illegible]

FIRST FLOOR

Drain By	
las	
Checked By	A-A1.3



1

Ø

Ø - Ø¹

|| Ø¹ = || - Ø¹

LOWER LEVEL - FIRE STATION

65 NEWBURY STREET
PORTLAND, ME 04101
207.761.9000
fax: 207.761.2010

OPTION A

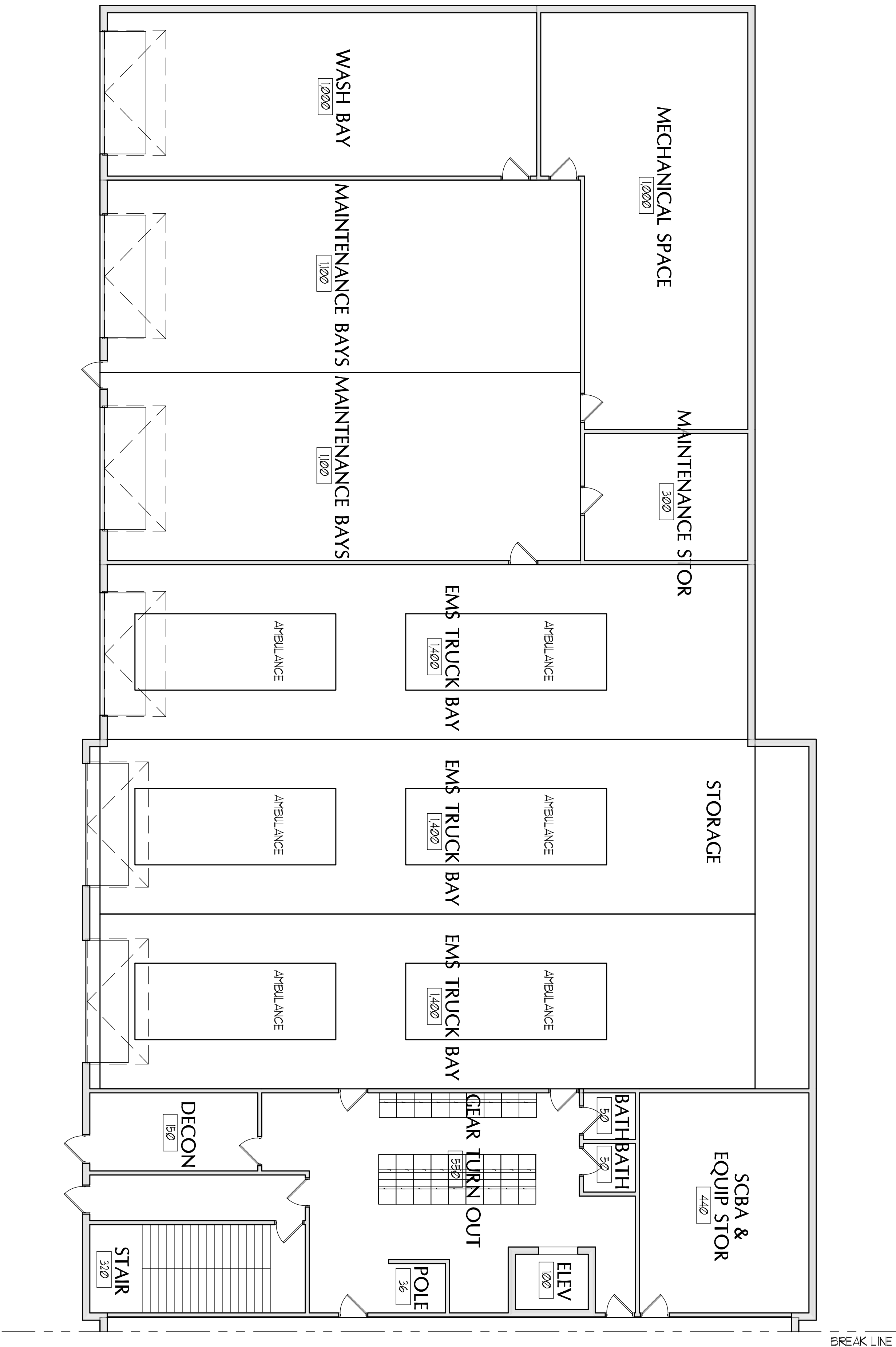
**CITY OF CARIBOU
PUBLIC SAFETY
BUILDING
CARIBOU, MAINE**

Date Issued	September 26, 2011
Project Number	1411
Scale	

LOWER LEVEL

Drawn By	A-A1.
Iss	
Checked By	

COPYRIGHT: Reuse or reproduction of the contents of this document is not permitted without written permission of PORT CITY ARCHITECTURE P



1 LOWER LEVEL - AMBULANCE

65 NEWBURY STREET
PORTLAND, ME 04101
207.761.9000
fax: 207.761.2010

**CITY OF CARIBOU
PUBLIC SAFETY
BUILDING
CARIBOU, MAINE**

[illegible]

Date Issued	September 26, 2018
Project Number	17411
Scale	

LOWER LEVEL

Drawn By	
1as	
Checked By	
1as	

A-A1

COPYRIGHT: Reuse or reproduction of the contents of this document is not permitted without written permission of PORT CITY ARCHITECTURE F