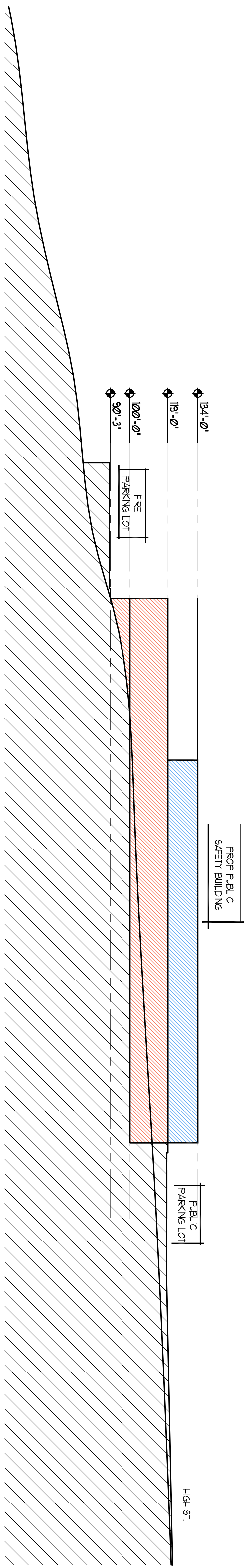


|                       |         |
|-----------------------|---------|
| <u>BUILDING AREA</u>  |         |
| SECOND FLOOR:         |         |
| POLICE DEPARTMENT     | 144 SF  |
| PUBLIC AREA           | 191 SF  |
| FIRE DEPARTMENT       | 856 SF  |
| TOTAL                 | 1891 SF |
| FIRST FLOOR:          |         |
| FIRE MAINTENANCE BAYS | 1951 SF |
| TOTAL                 | 3842 SF |



SECTION - LOCATION TO BE DETERMINED



**SITE PLAN**

1

32'-0"

1/32' = 1'-0"

## OPTION D

**CITY OF CARIBOU  
PUBLIC SAFETY  
BUILDING  
CARIBOU, MAINE**

|  |  |  |  |  |  |  |  |
|--|--|--|--|--|--|--|--|
|  |  |  |  |  |  |  |  |
|  |  |  |  |  |  |  |  |

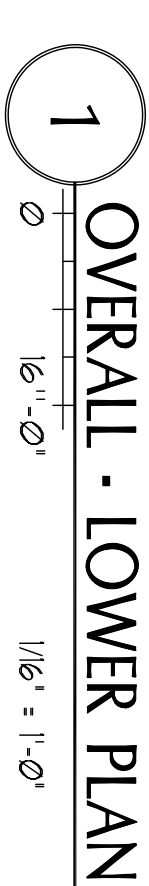
|                |                    |
|----------------|--------------------|
| Date Issued    | September 26, 2018 |
| Project Number | 17411              |
| Scale          |                    |

# SITE PLAN

|                   |        |
|-------------------|--------|
| Drawn By<br>las   | D-S1.1 |
| Checked By<br>las |        |

COPYRIGHT: Reuse or reproduction of the contents of this document is not permitted without written permission of PORT CITY ARCHITECTURE PA





65 NEWBURY STREET  
PORTLAND, ME 04101  
207.761.9000  
fax: 207.761.2010

## OPTION D

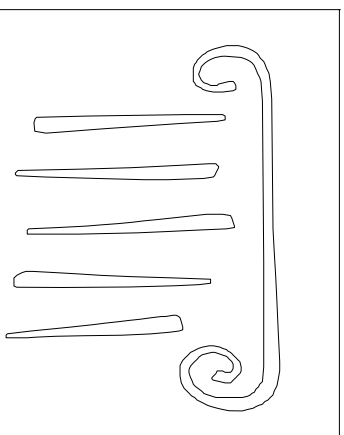
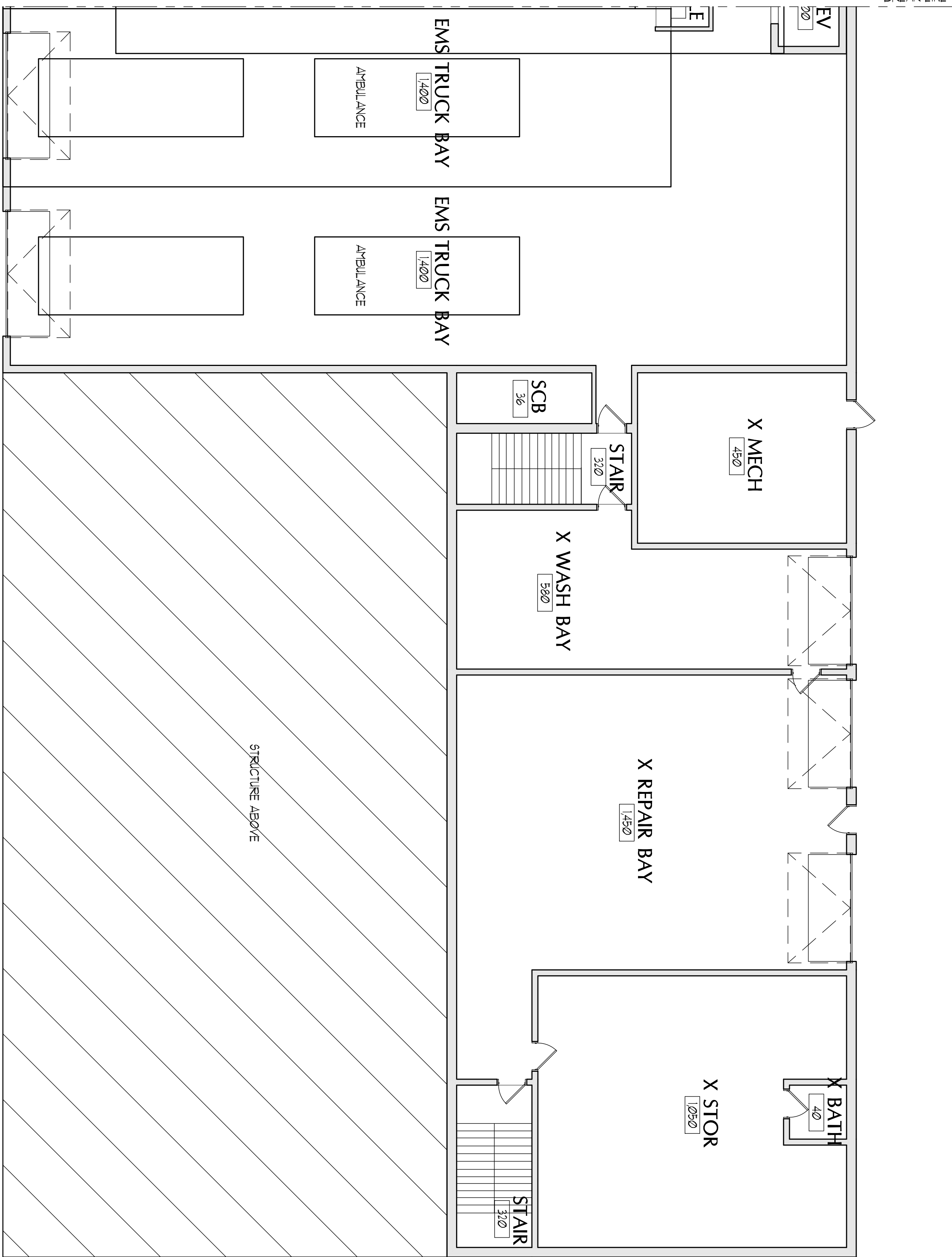
**CITY OF CARIBOU  
PUBLIC SAFETY  
BUILDING  
CARIBOU, MAINE**

## OVERALL PLAN

## D-A1.1

ISSUED FOR  
PROGRAMMING  
NOT FOR  
CONSTRUCTION

COPYRIGHT: Reuse or reproduction of the contents of this document is not permitted without written permission of PORT CITY ARCHITECTURE PA



PORT CITY  
ARCHITECTURE

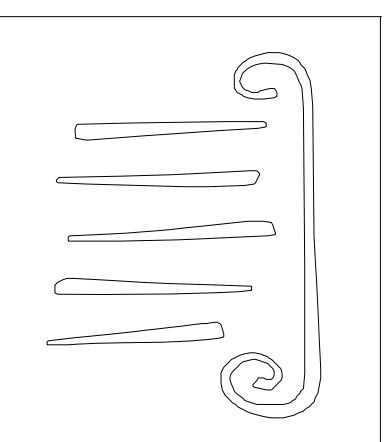
65 NEWBURY STREET  
PORTLAND, ME 04101  
207.761.9000  
fax: 207.761.2010

OPTION D

CITY OF CARIBOU  
PUBLIC SAFETY  
BUILDING  
CARIBOU, MAINE

|                |                      |
|----------------|----------------------|
| Date Issued    | September 16, 2018   |
| Project Number | 17411                |
| Scale          |                      |
| Sheet Name     | RENOVATED LOWER PLAN |

|              |                                  |
|--------------|----------------------------------|
| Drawn By     | las                              |
| Checked By   | las                              |
| Issued For   | PROGRAMMING NOT FOR CONSTRUCTION |
| Sheet Number | D-A12                            |



REPORT ■ CITY  
ARCHITECTURE

65 NEWBURY STREET  
PORTLAND, ME 04101  
207.761.9000  
fax: 207.761.2010



# OPTION D

**CITY OF CARIBOU  
PUBLIC SAFETY  
BUILDING  
CARIBOU, MAINE**

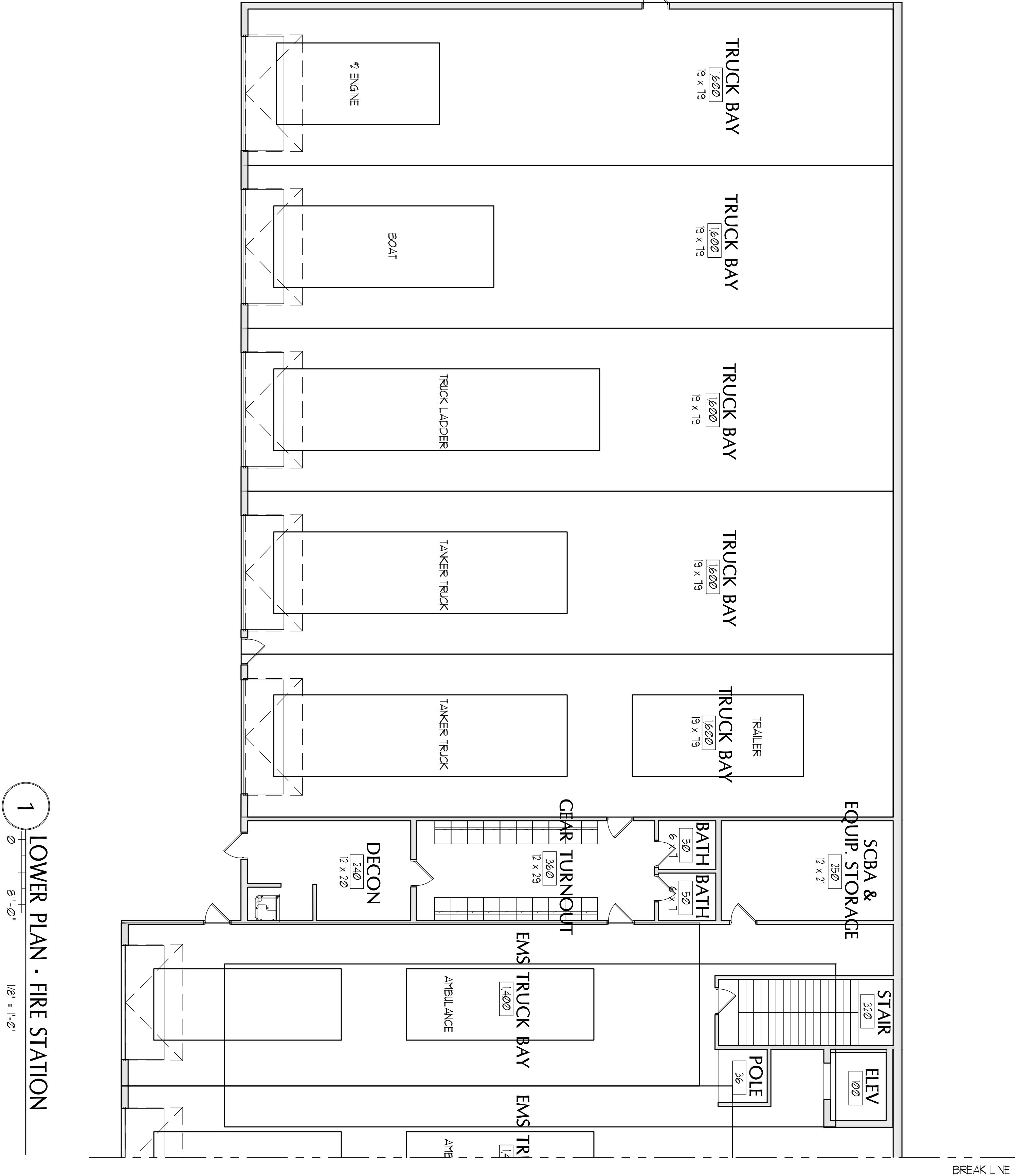
|  |  |
|--|--|
|  |  |
|  |  |
|  |  |
|  |  |
|  |  |
|  |  |
|  |  |
|  |  |

Date issued      September 26, 2011  
 Project Number      T7411  
 Scale

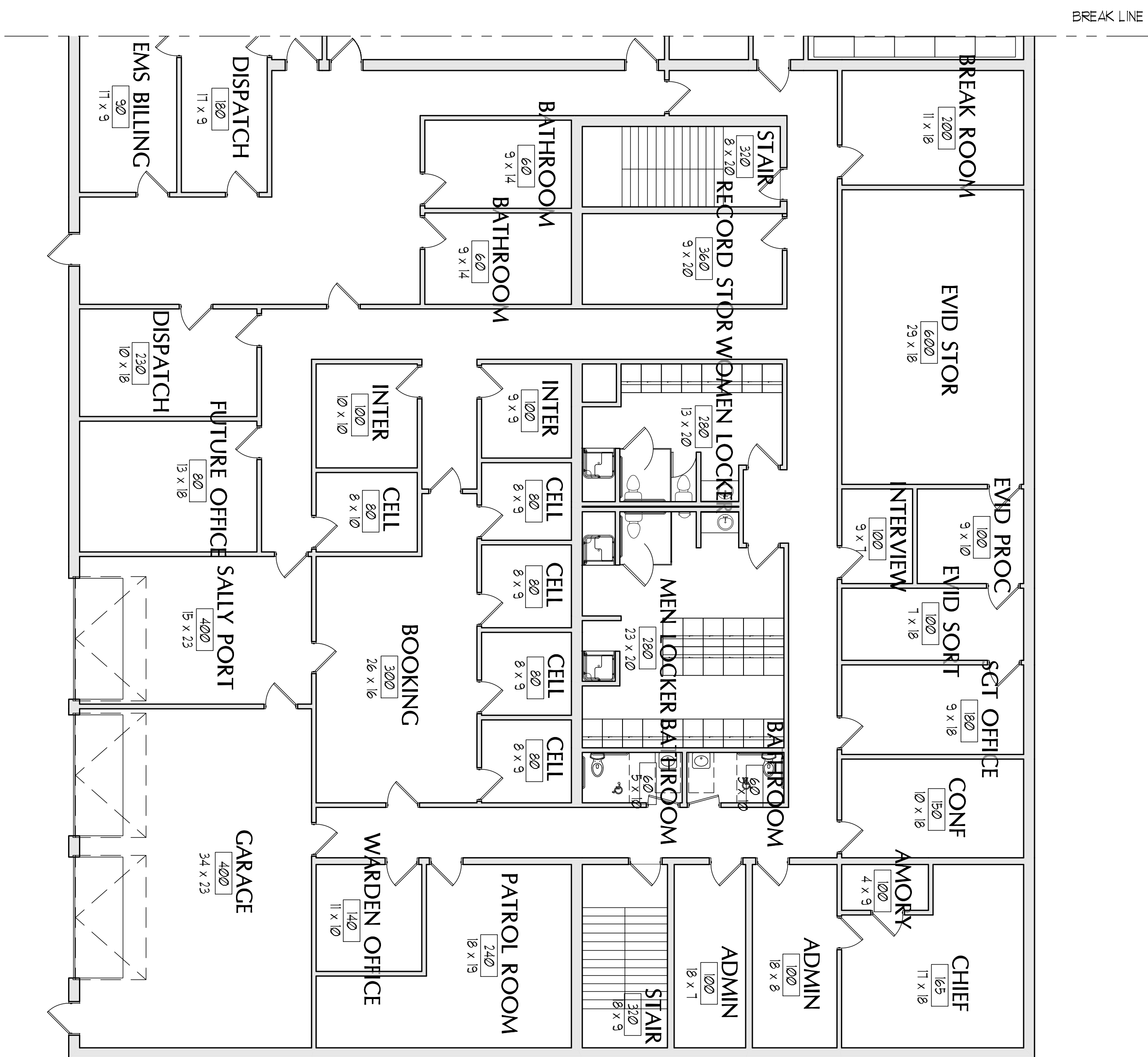
SHEET NAME  
NEW  
LOWER PLAN

|                   |        |
|-------------------|--------|
| 185<br>Checked By | D-A1.3 |
|-------------------|--------|

ISSUED FOR  
PROGRAMMING  
NOT FOR  
CONSTRUCTION



1 LOWER PLAN - FIRE STATION



1  
FIRST FLOOR - POLICE STATION  
0 8''-0' 1/8' = 1'-0'

65 NEWBURY STREET  
PORTLAND, ME 04101  
207.761.9000  
fax: 207.761.2010

## OPTION D

**CITY OF CARIBOU  
PUBLIC SAFETY  
BUILDING  
CARIBOU, MAINE**

|                |                    |
|----------------|--------------------|
| Date Issued    | September 26, 2018 |
| Project Number | 17411              |
| Scale          |                    |

SHEET NAME  
**RENOVATED  
FIRST FLOOR**

|            |        |
|------------|--------|
| Drawn By   |        |
| Iss        |        |
| Checked By |        |
| Iss        | D-A1.4 |

ISSUED FOR  
PROGRAMMING  
NOT FOR  
CONSTRUCTION

COPYRIGHT: Reuse or reproduction of the contents of this document is not permitted without written permission of PORT CITY ARCHITECTURE PA

