

TYLin _rasor

City of Caribou
Village Partnership Initiative
Transportation Planning Study
PUBLIC MEETING



Wellness & Recreation Center
December 19, 2024
6:30 PM





Presentation Outline

1. MaineDOT Village Partnership Initiative (VPI)
2. Study Team and Study Area
3. Goals Identified by the Study Team
4. Existing Conditions and Transportation System Needs
5. Review of Initial Planning Concepts
6. Public Questions and Discussion



MaineDOT Village Partnership Initiative

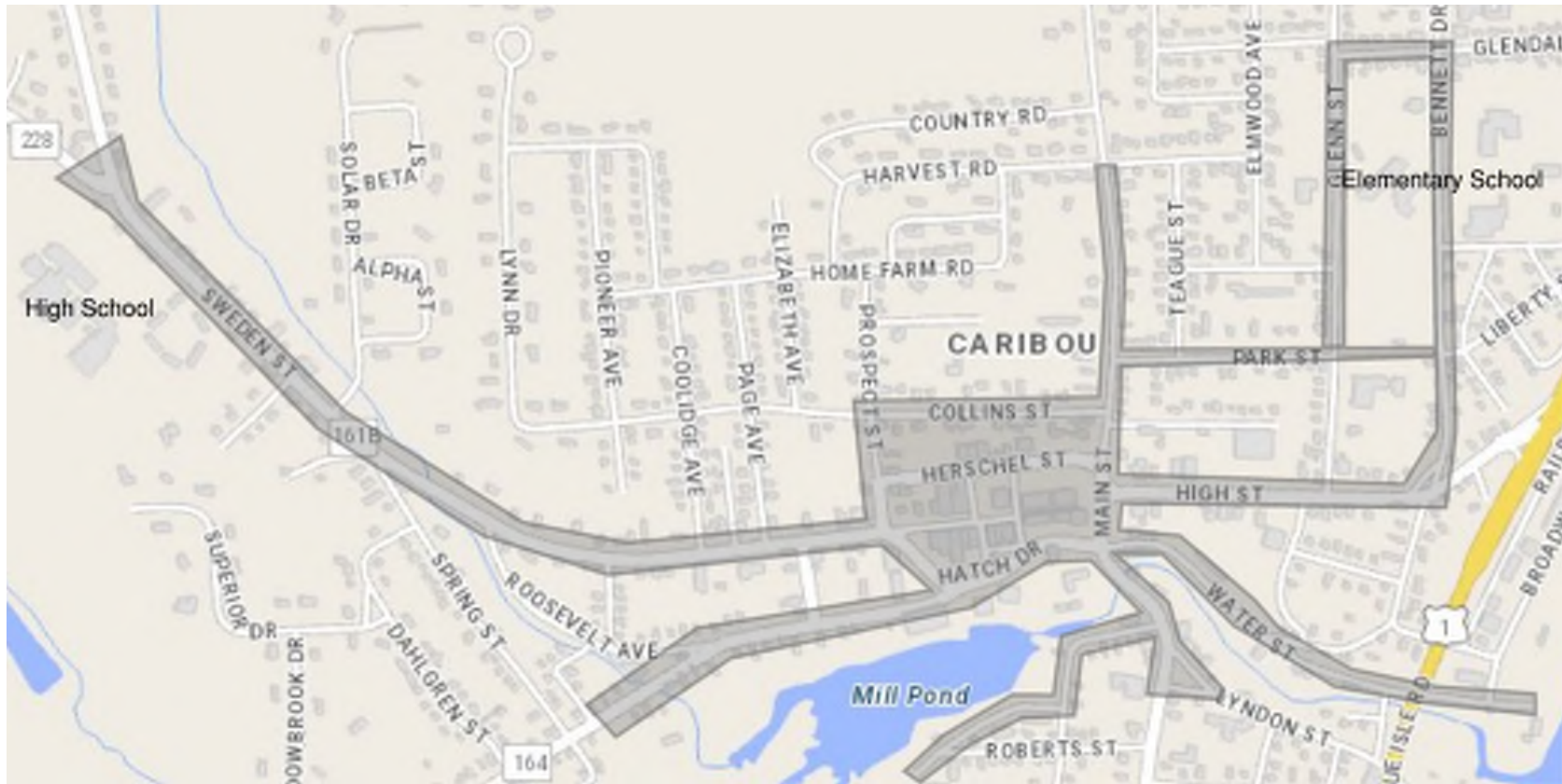
The Village Partnership Initiative (VPI) is intended to address **time-sensitive, locally-initiated planning and feasibility studies** that occur outside MaineDOT's normal annual Work Plan cycle. The approach is to **study, evaluate, plan and scope transportation projects** on or adjacent to the state transportation system with MaineDOT as a partner. While MaineDOT will continue to evaluate requests for planning studies and engineering assessments during its annual Work Plan process, the VPI program is intended to be **simple, flexible, and fast-moving for new economic development** and other high-priority proposals. MaineDOT will respond to regional and local interests, economic opportunities, and safety needs whenever possible, while ensuring the public gets good value for its tax dollars. Municipalities, Regional Planning Organizations, other transportation stakeholders and private entities may request or apply for VPIs. Since MaineDOT already provides discretionary transportation planning funds to MaineDOT's four Metropolitan Planning Organizations (MPO), VPIs are directed outside MPO planning boundaries. The VPI is for **planning activities only and is not intended for project design.**



Study Team

- City of Caribou and Northern Maine Development Commission (NMDC)
 - Penny Thompson, Caribou City Manager
 - Jay Kamm, NMDC Senior Planner
- MaineDOT Bureau of Planning
 - Jarod Farn-Guillette, Regional Planner and Tribal Liaison
- TYLin (Project Management, Traffic Engineering, Conceptual Planning)
 - Chris Helstrom, PE, Project Manager
 - Tom Errico, PE, Senior Traffic Engineer
 - Shawn Davis, PE, Quality Manager
- Rasor Landscape Architecture (Streetscapes, Lighting)
 - Mitchell Rasor, LAR, Principal

Study Area

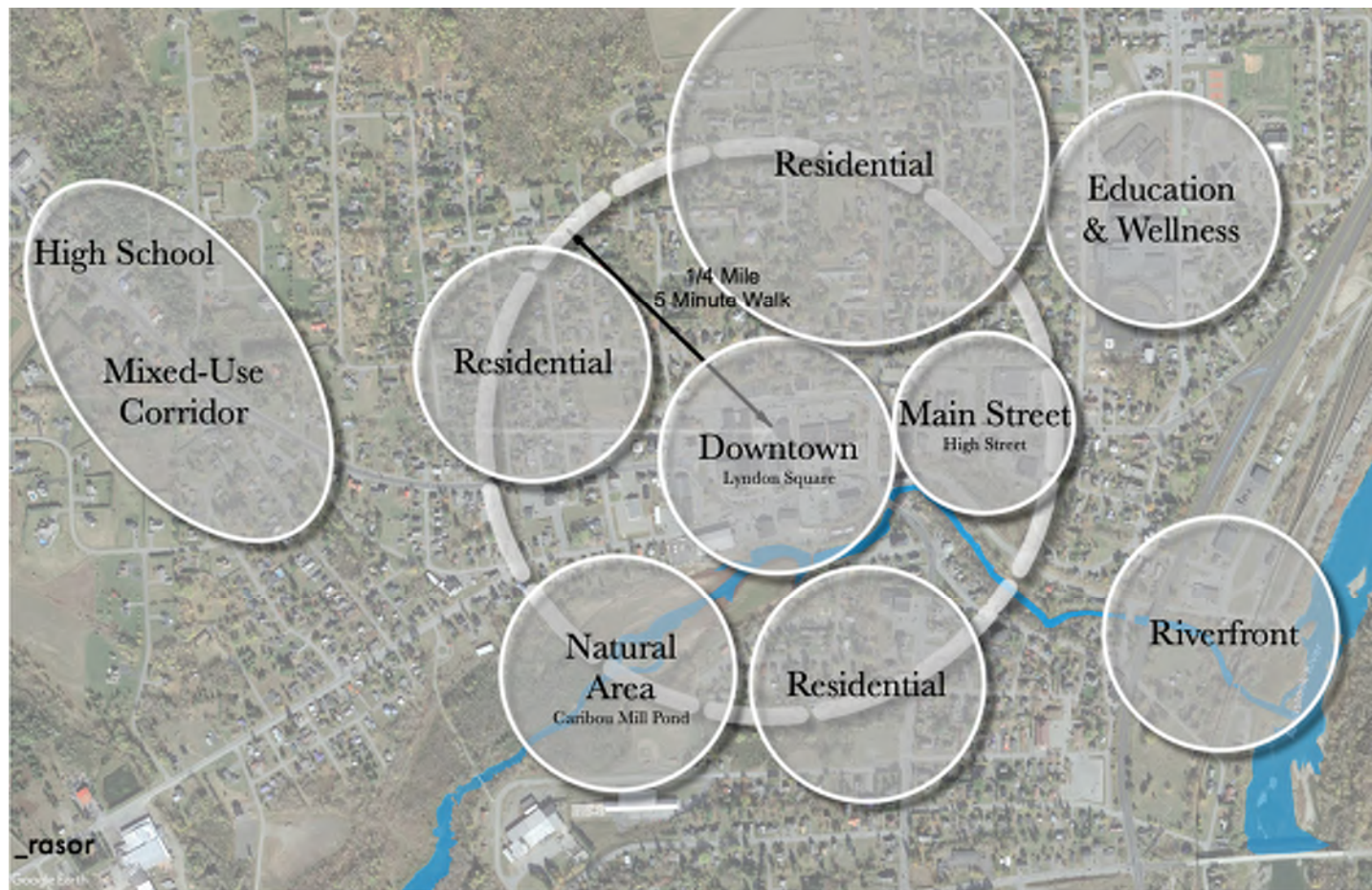




Goals Identified by Study Team

- Increased Safety for All Users of the Transportation System
- Improved Pedestrian and Bicycle Connectivity Between Existing Assets
- Enhanced Aesthetics and User Experience Within Lyndon Square
- Traffic Considerations for Downtown Access and Economic Development

Existing Conditions: Character Areas



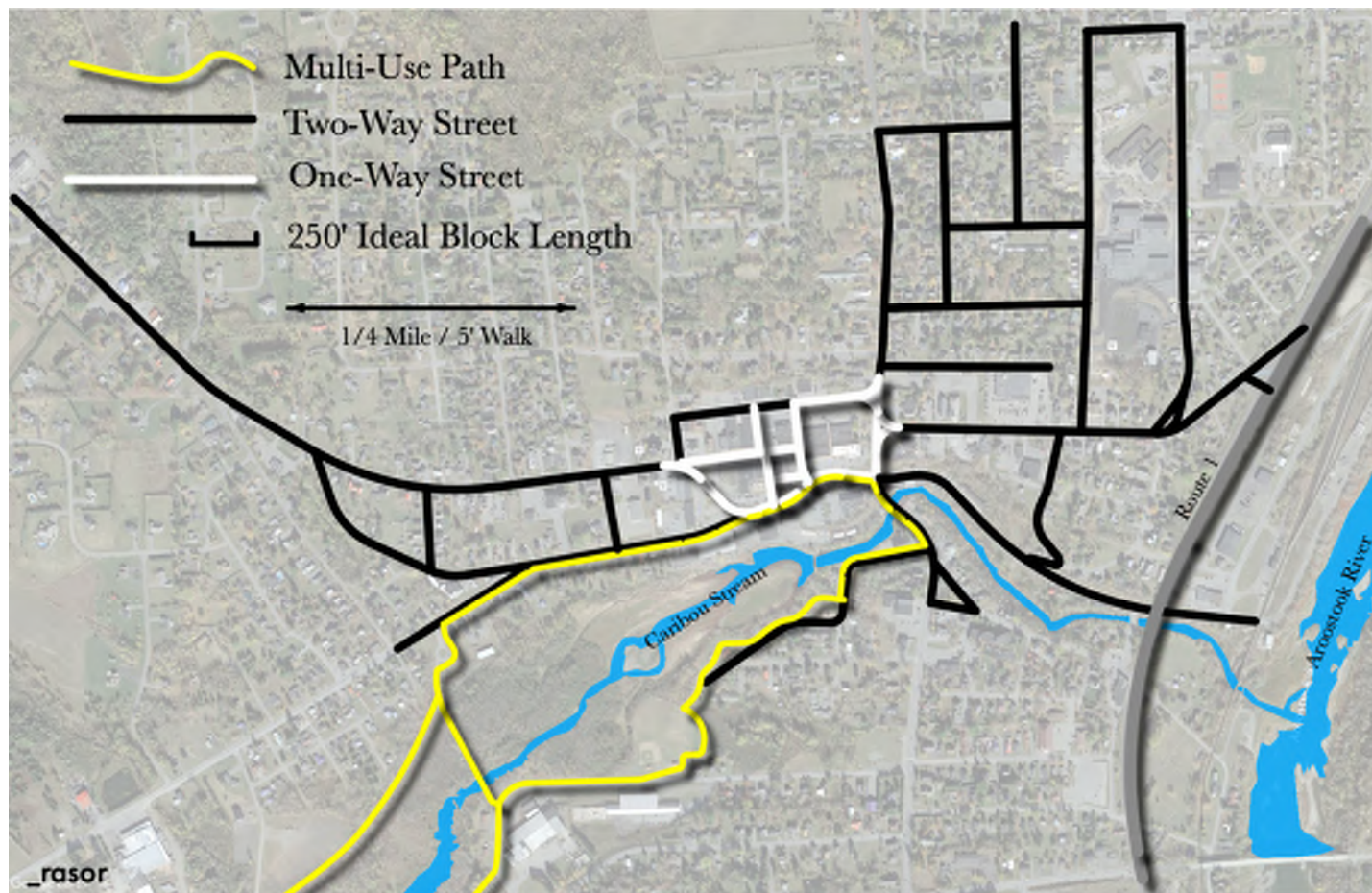
Existing Conditions: Pedestrian Sheds



Existing Conditions: Lyndon Square



Existing Conditions: Connectivity



Bennett Drive/High Street: High Crash Location



Existing Conditions: Wide Typical Sections



High Street



Hatch Drive

Existing Conditions: Wide Typical Sections

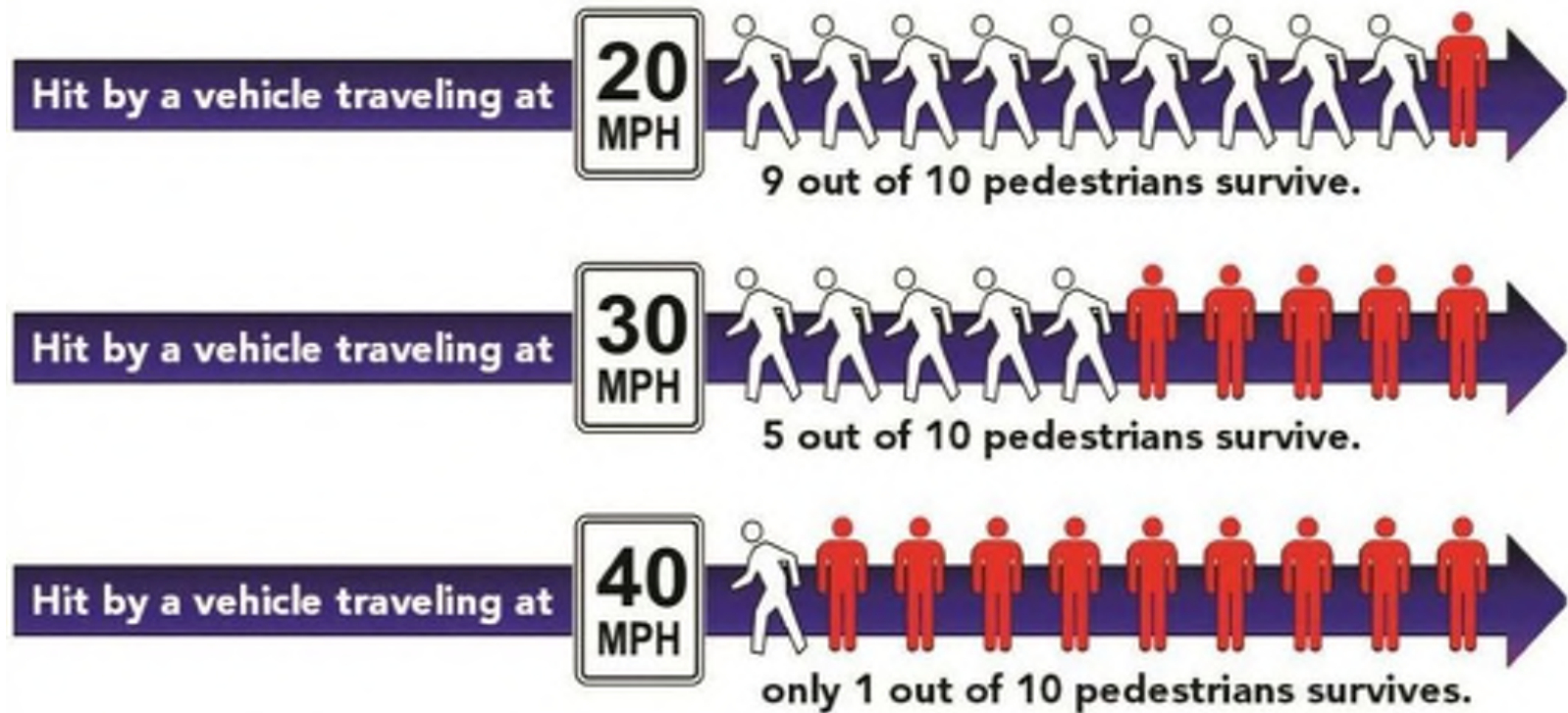


Sweden Street

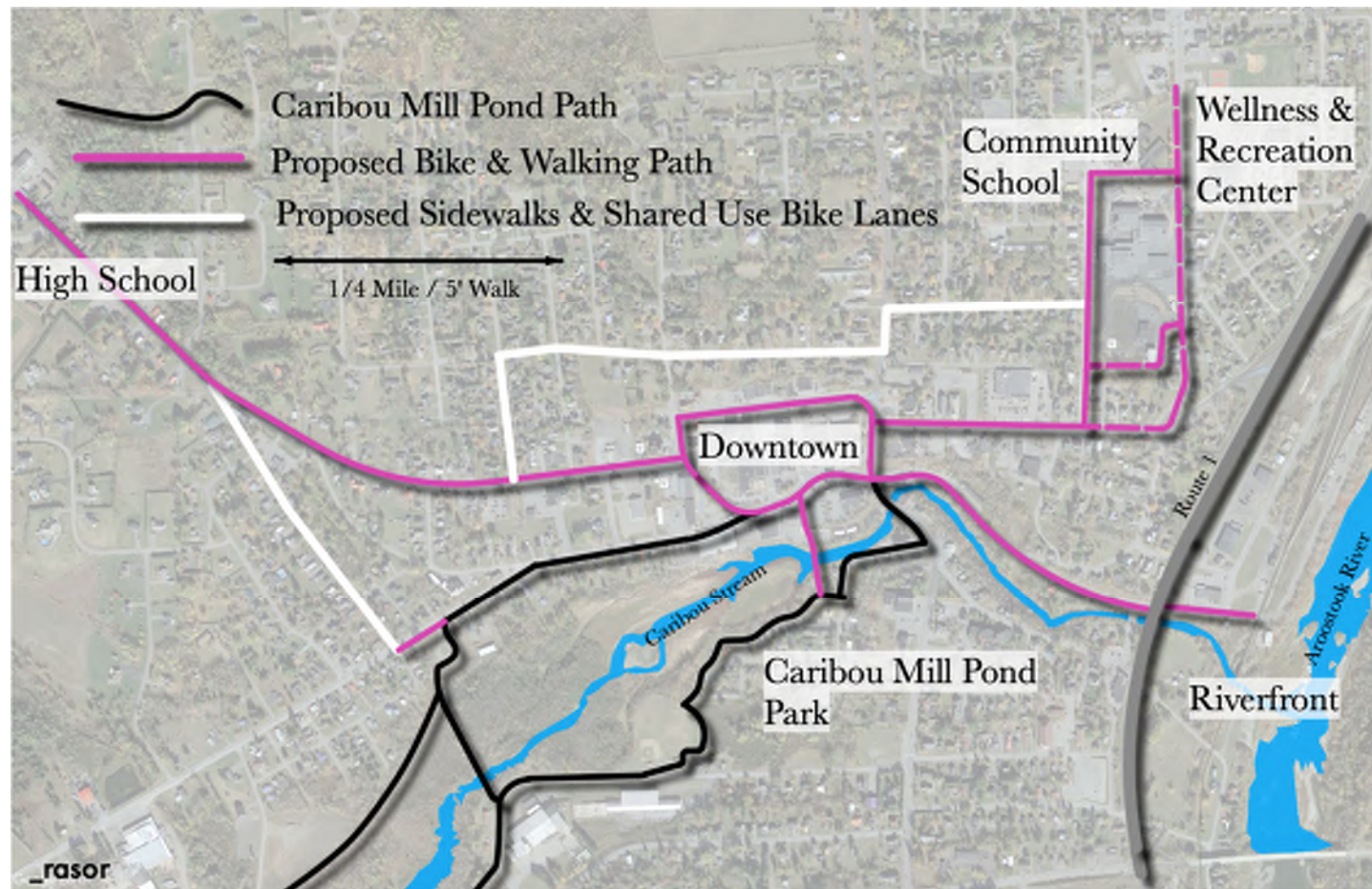


Herschel Street

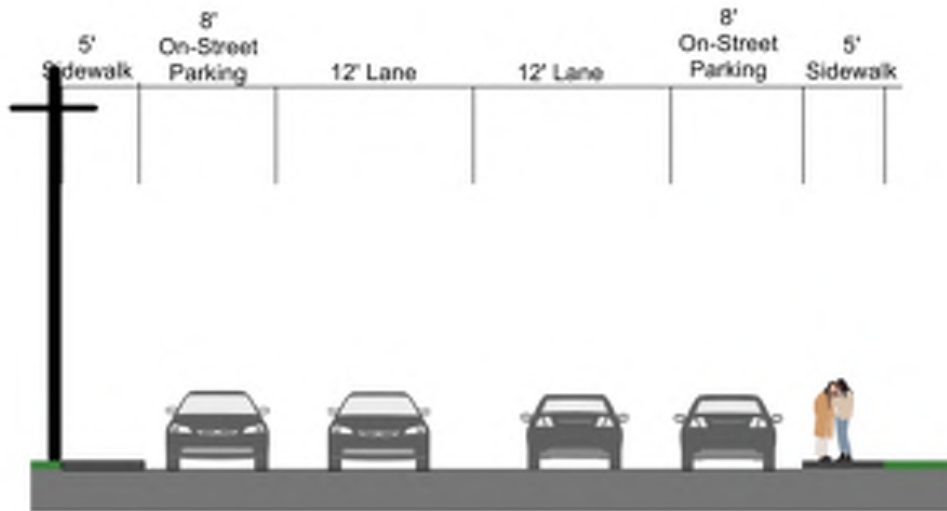
Existing Conditions: Excessive Vehicle Speeds



Initial Planning Concepts: Active Transportation



Bicycle and Pedestrian Connectivity: Outer Sweden Street

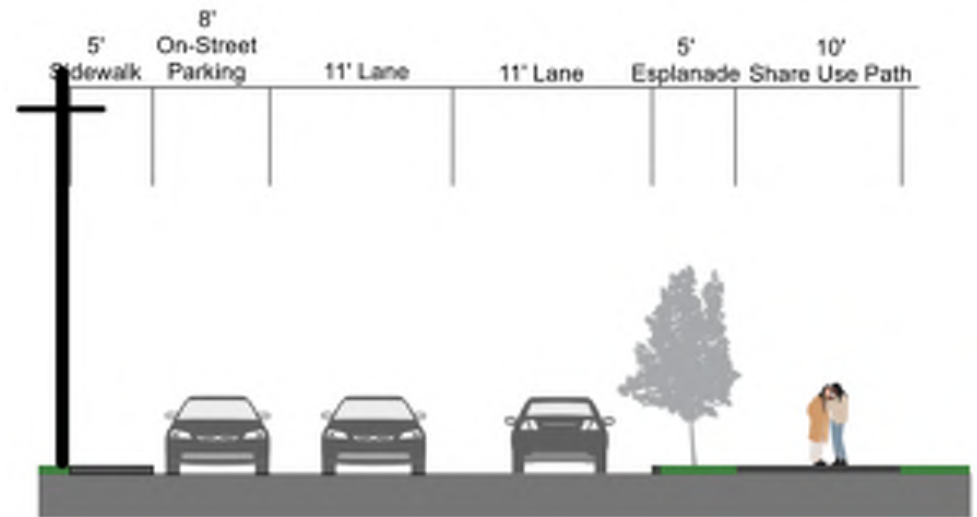


Outer Sweden Street - Existing (looking west) - Sketch

Caribou, Maine

12.19.24

_rasor



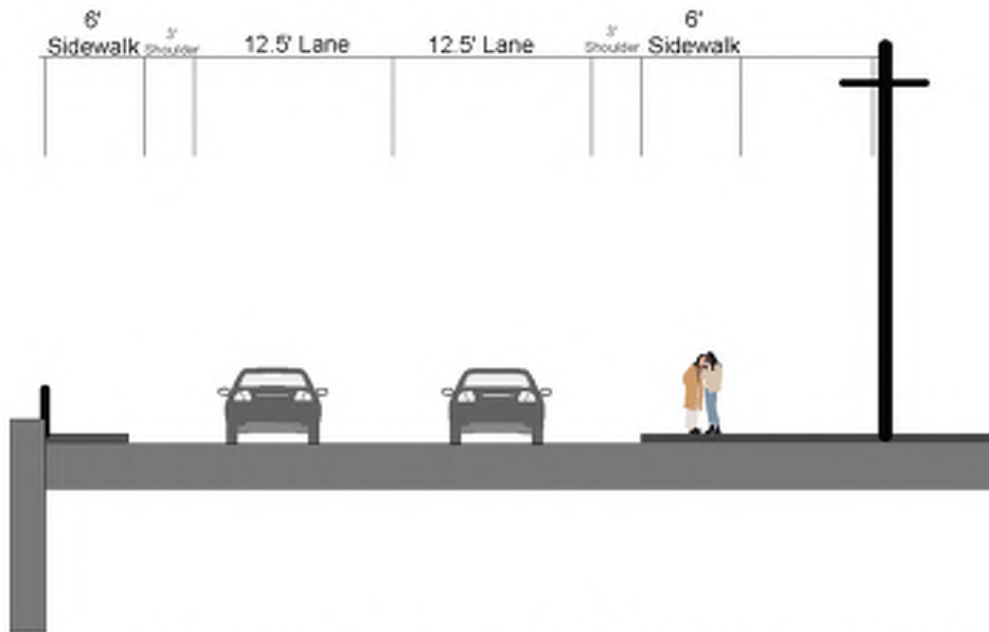
Outer Sweden Street - Proposed (looking west) - Sketch

Caribou, Maine

12.19.24

_rasor

Bicycle and Pedestrian Connectivity: Herschel Street

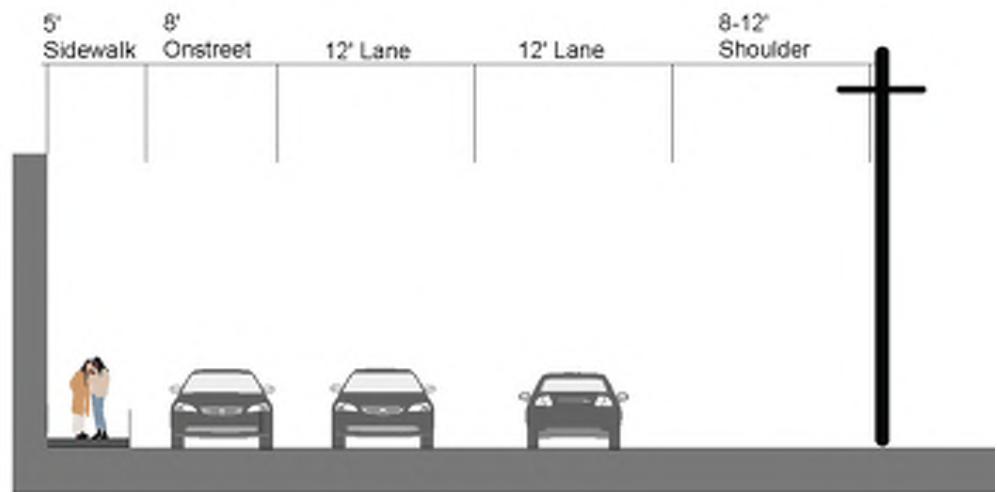


Herschel Street - Existing One Way Section (looking west) - Sketch

Caribou, Maine

11.4.24

_rasor



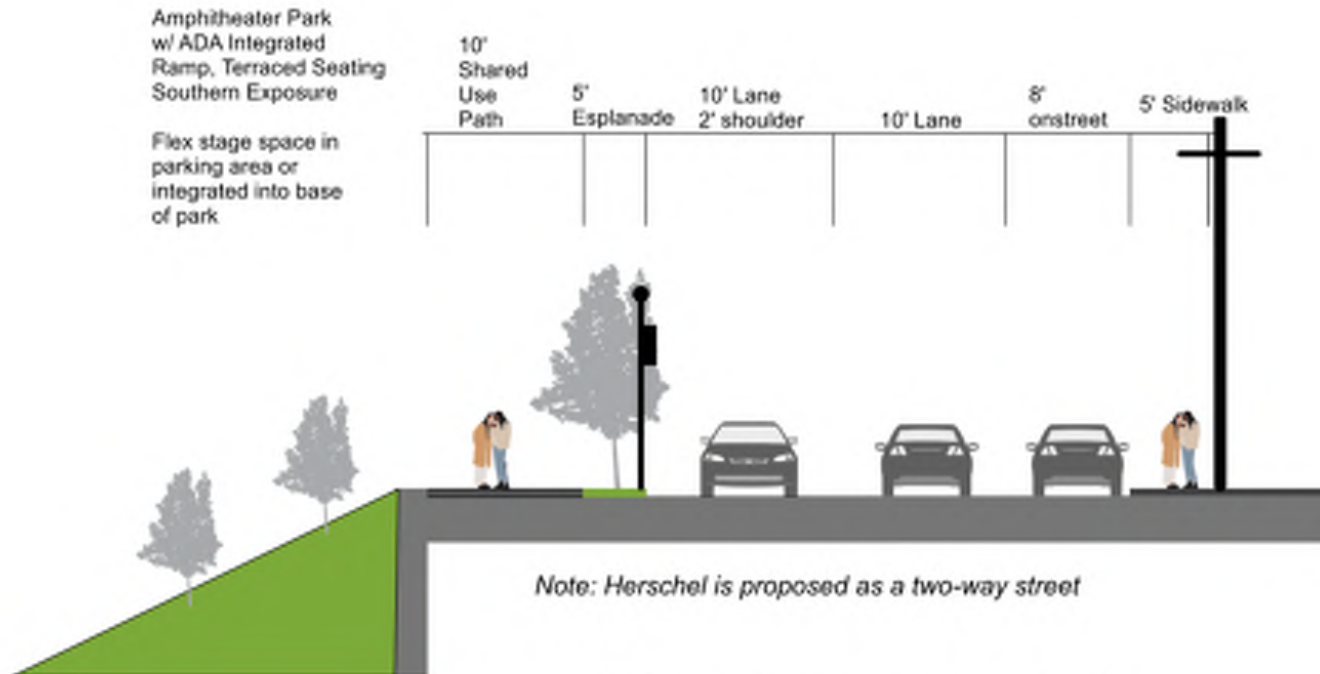
Herschel Street - Existing Two Way Section (looking west) - Sketch

Caribou, Maine

11.4.24

_rasor

Bicycle and Pedestrian Connectivity: Herschel Street



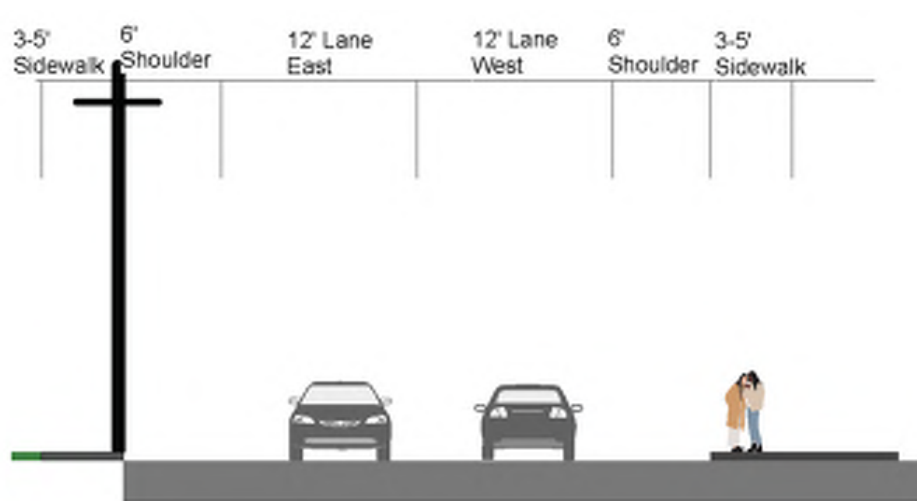
Herschel Street - Proposed (looking west) - Sketch

Caribou, Maine

12.19.24

_rasor

Bicycle and Pedestrian Connectivity: High Street

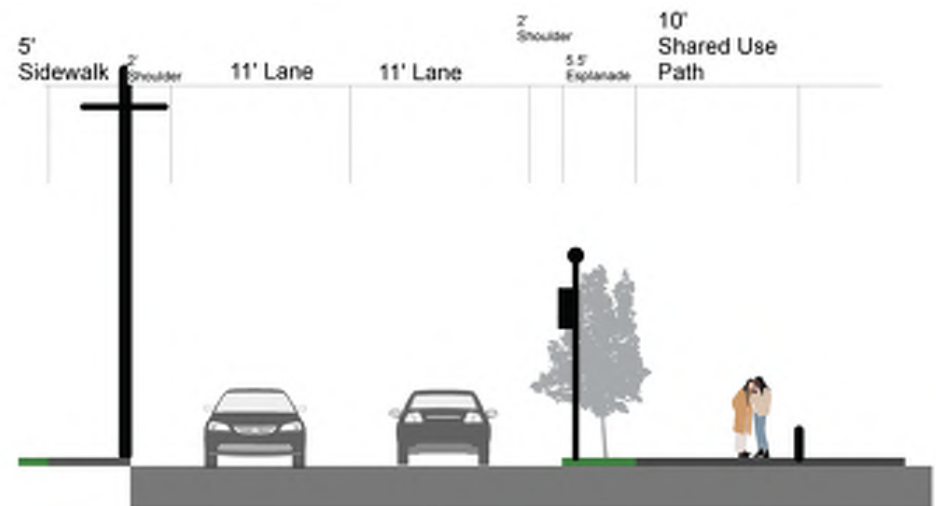


High Street - Existing (looking west) - Sketch

Caribou, Maine

11.4.24

_rasor



High Street - Proposed (looking west) - Sketch

Caribou, Maine

11.4.24

_rasor

Bicycle and Pedestrian Connectivity: High Street

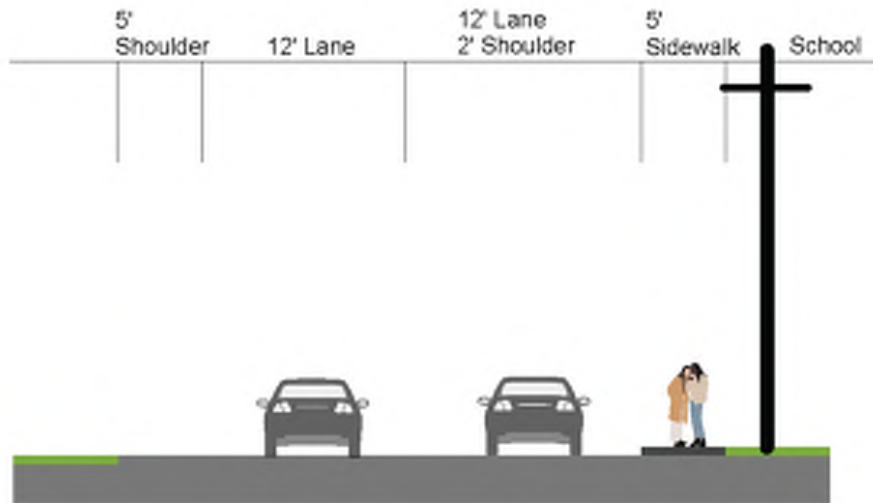


Existing



Proposed

Bicycle and Pedestrian Connectivity: Glenn Street

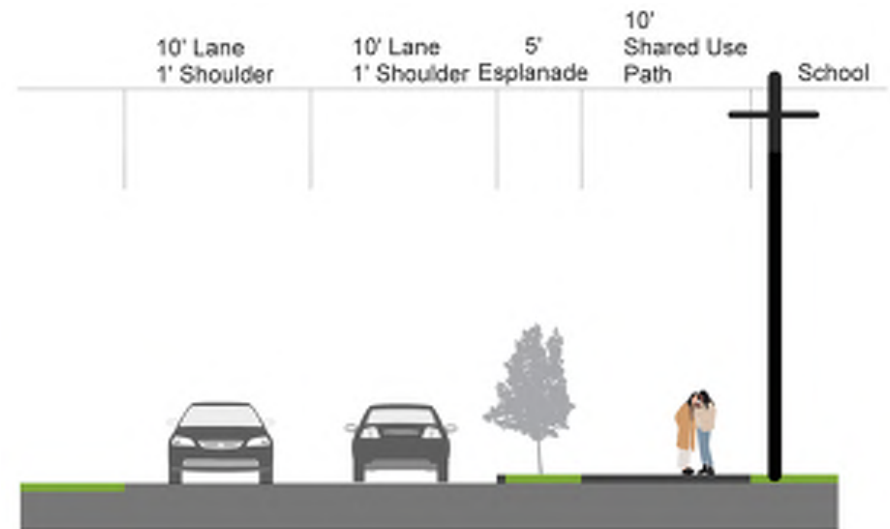


Glenn Street - Existing (looking north) - Sketch

Caribou, Maine

11.4.24

_rasor



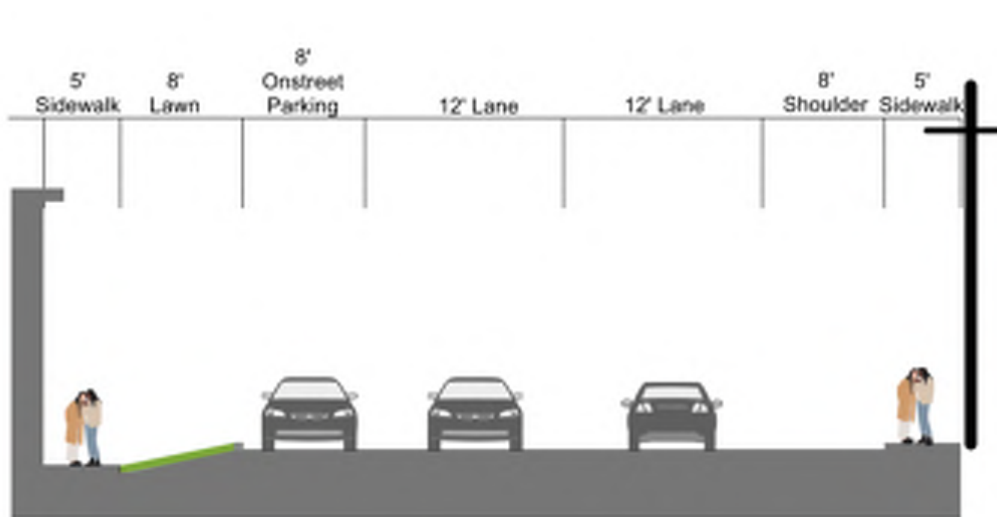
Glenn Street - Proposed (looking north) - Sketch

Caribou, Maine

11.4.24

_rasor

Bicycle and Pedestrian Connectivity: Water Street

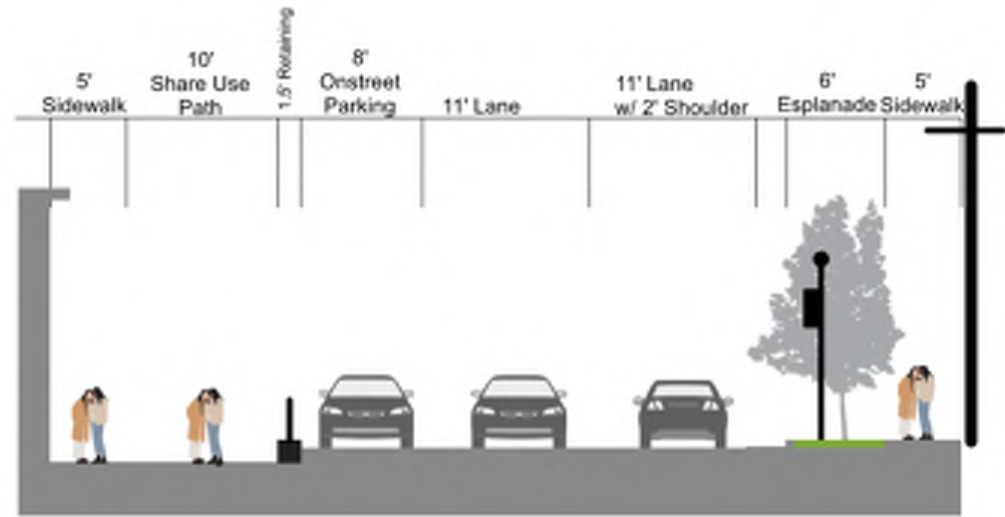


Water Street at Main Street - Existing Two Way Section (looking Downtown) - Sketch

Caribou, Maine

12.19.24

_rasor



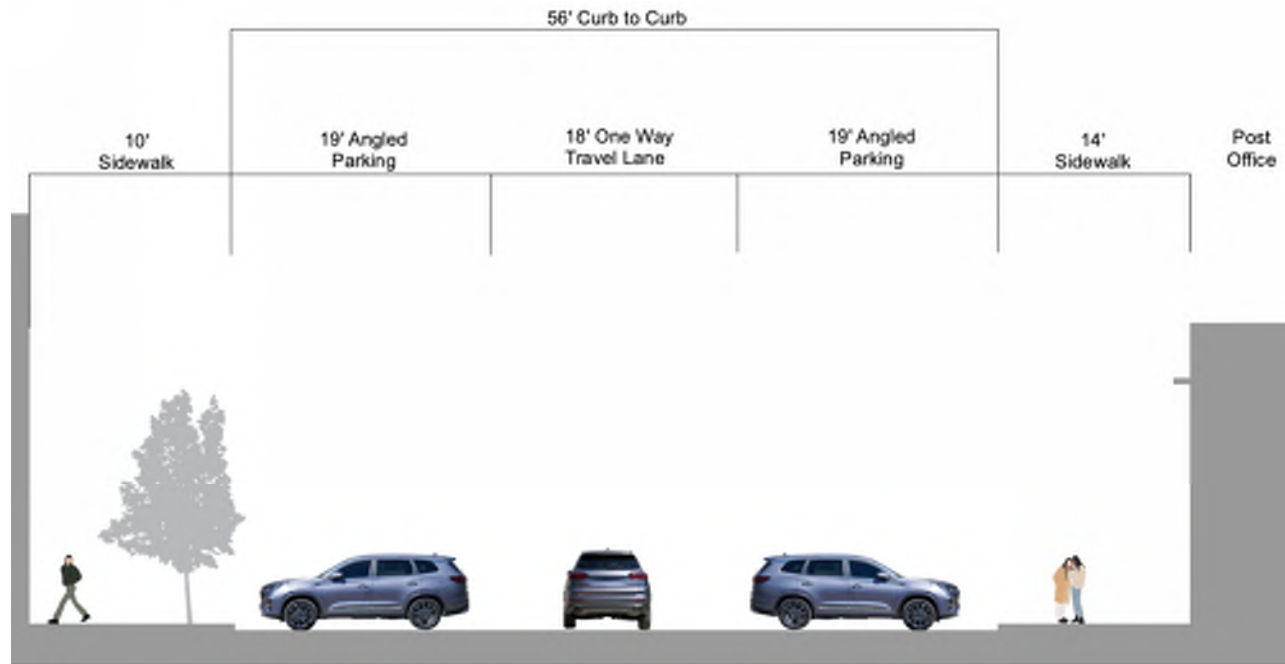
Water Street at Main Street - Proposed Two Way Section (looking Downtown) - Sketch

Caribou, Maine

12.19.24

_rasor

Downtown Connectivity: Sweden Street



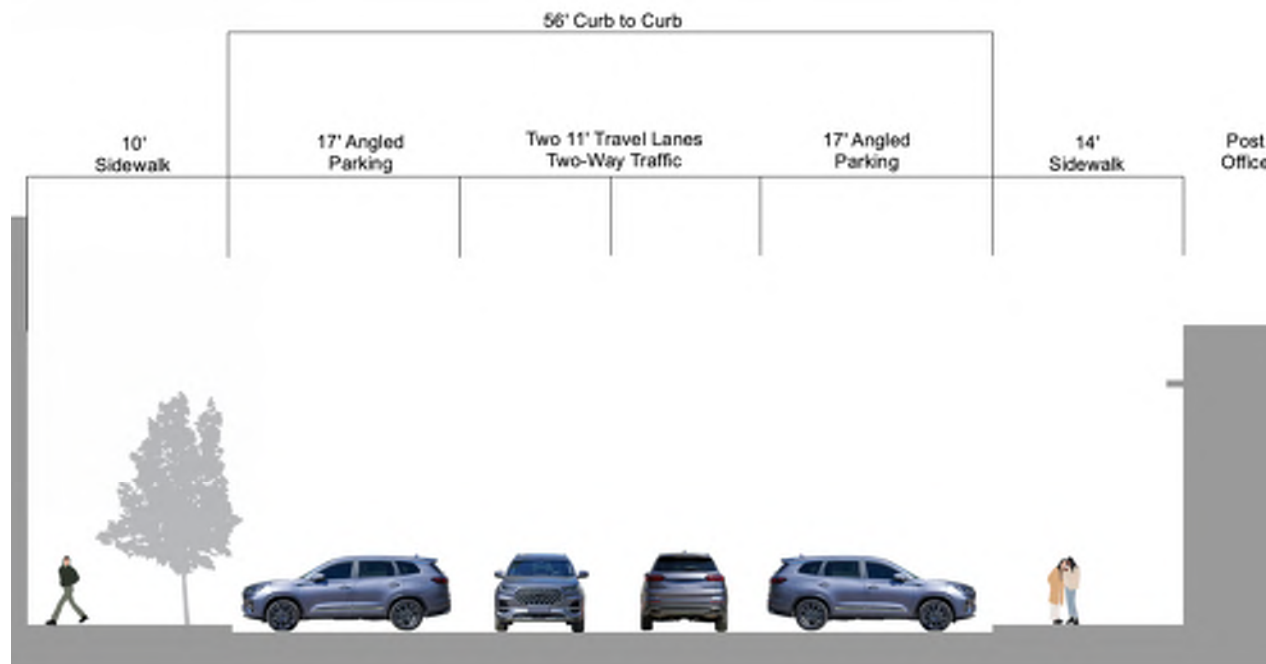
Sweden Street - Existing at Post Office (looking west) - Sketch

Caribou, Maine

12.19.24

_rasor

Downtown Connectivity: Sweden Street

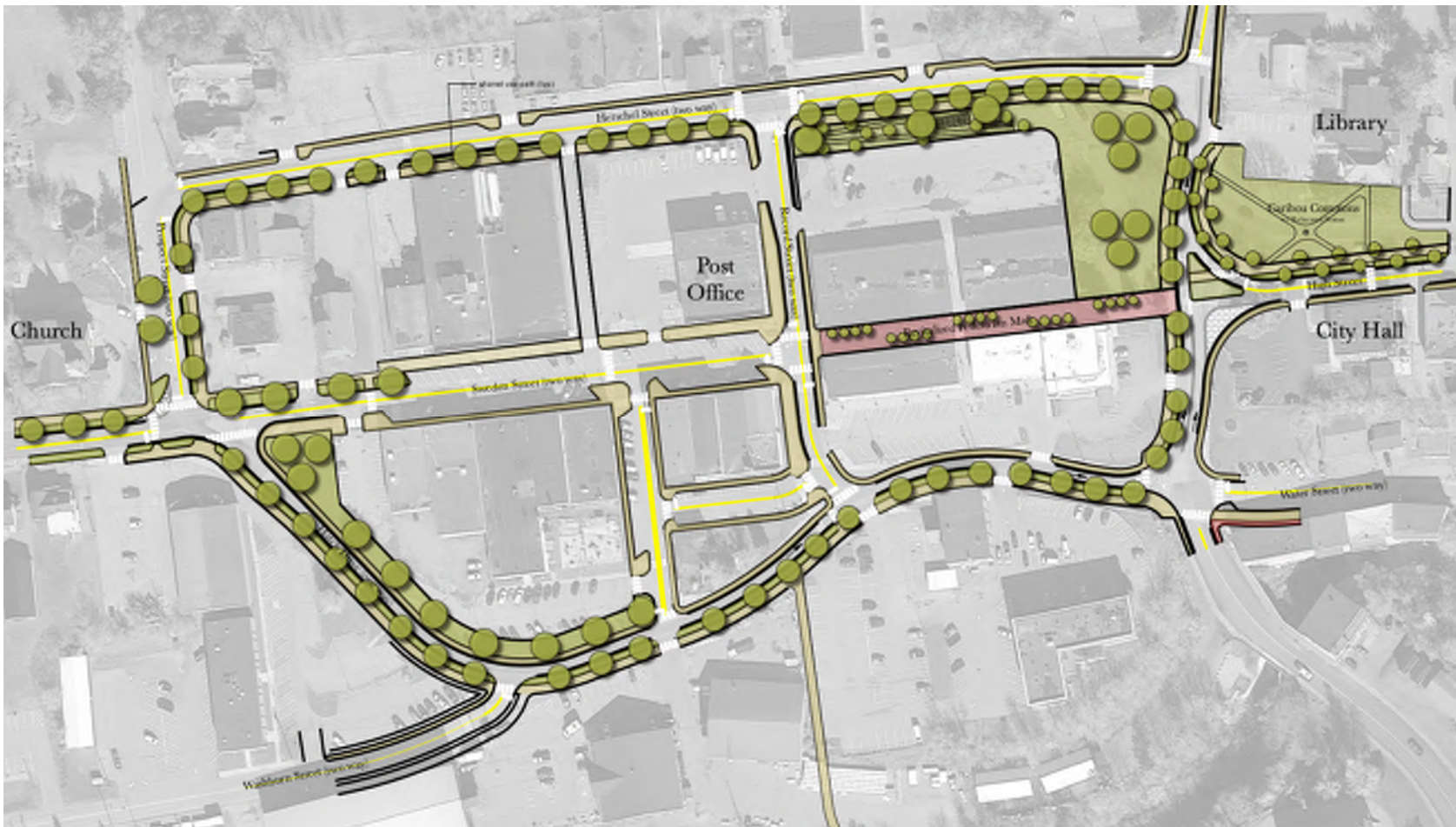


Sweden Street - Proposed at Post Office (looking west) - Sketch

Caribou, Maine

12.19.24

_rasor



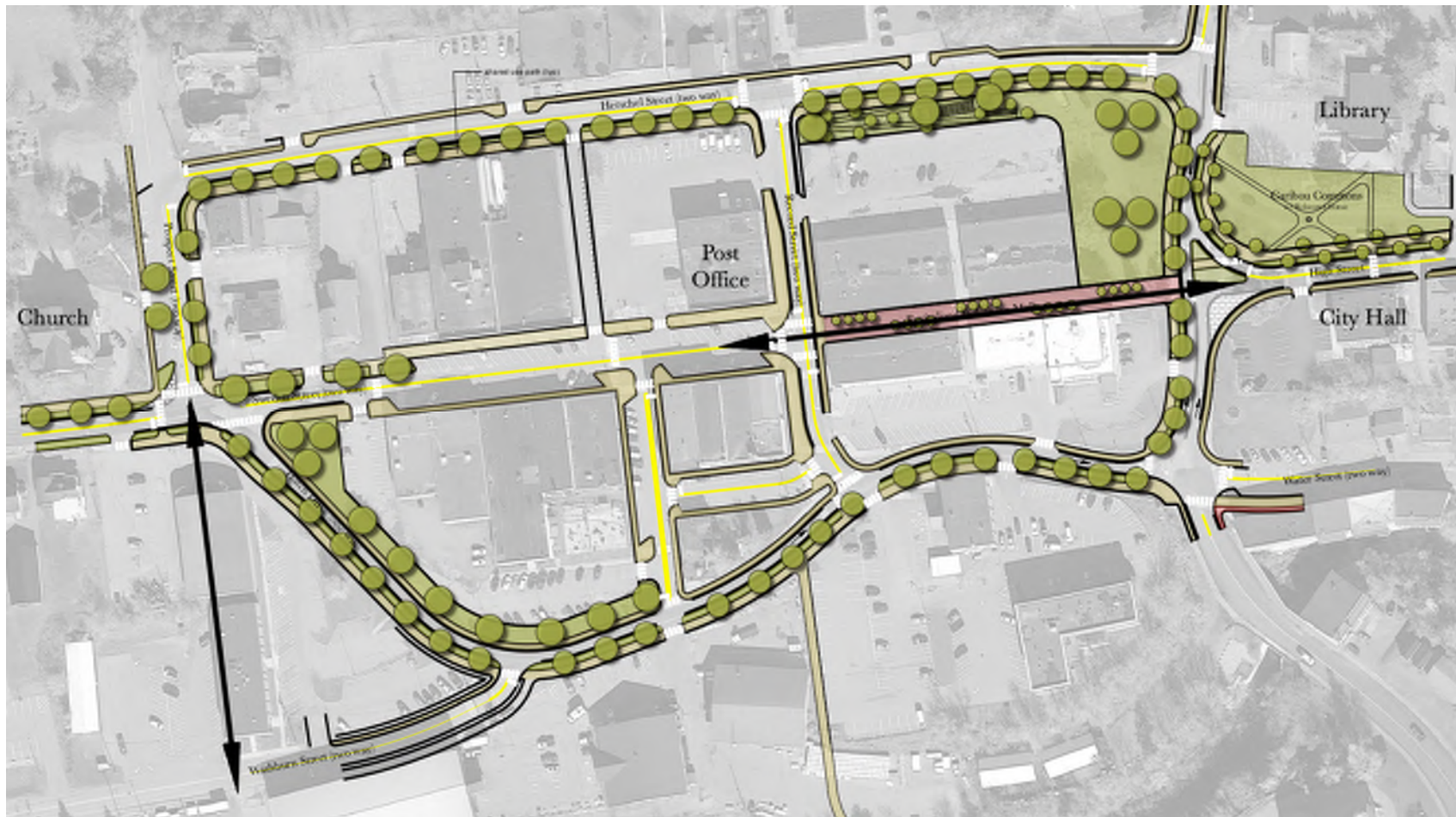
Initial Planning Concepts: Downtown Layout



Initial Planning Concepts: Downtown Layout



Initial Planning Concepts: Downtown Layout (Visionary)



Public Comments

Penny Thompson

City Manager

(207) 493-5961

pthompson@cariboumaine.org

