

PLUMBING FIXTURE SCHEDULE						
NO.	FIXTURE	WASTE	VENT	HW	CW	REMARKS/DESCRIPTION
P-1	FLOOR MOUNTED TOILET (ADA)	4"	2"	-	1"	KOHLER KOHLER HIGHCLIFF ULTRA FLOOR MOUNTED TOILET (K-96057-B) FEATURES COTTON COLOR, 10-1-6 GPF TOP SPUD FLUSHOMETER FLUSHING SYSTEM, FLOOR ROUGH-IN, UNIVERSAL HEIGHT, AND ELONGATED FRONT BOWL, COMFORT HEIGHT HIGH EFFICIENCY BOWL K-4392, SLOAN ROYAL FLUSHOMETER 111-1-6, CHURCH SEAT 16955STFR OPEN FRONT, SELF-SUSTAINING CHECK HINGE, ANTIMICROBIAL PROTECTION AND FIRE RETARDANT.
P-2H	COUNTER TOP UNDER MOUNTED LAVATORY	1-1/2"	1-1/2"	1/2"	1/2"	KOHLER KATHRYN (K2330) UNDERMOUNT, ADA, OVERFLOW, RECTANGULAR VITREOUS CHINA BASIN, WHITE, P.C. SHALL PROVIDE CHICAGO FAUCET ELECTRONIC-DC FAUCET (EQC11A-134BCP) SINGLE HOLE, DECK MOUNTED, HIGH ARC, CONCEALED TMV, 0.5 GPM VANDER-PROOF NON-AREATING SPRAY, PROVIDE BRANDED STAINLESS STEEL SUPPLY, OFFSET WHEELCHAIR DRAIN & TAILPIECE AND CHROME PLATED CAST BRASS P-TRAP WITH CLEANOUT, HEAVY DUTY KEYSUPPLY STOPS, WASTE AND SUPPLY INSULATION AND PROTECTION KIT.
P-2W	LAVATORY WALL MOUNTED (ADA)	2"	1-1/2"	1/2"	1/2"	KOHLER KINGSTON WALL MOUNTED BATHROOM SINK K-3005-R WITH CONCEALED ARM SUPPORT, PROVIDE FLOOR MOUNTED CONCEALED ARM CARRIER, CHICAGO FAUCET MANUAL FAUCET 420-145ABCP, 0.35 GPM, ASSE 1070 CERTIFIED, KOHLER K-7131-A OFFSET GRID DRAIN WITH OVERFLOW, KOHLER K-8998 P-TRAP, SUPPLY STOP AND FLEXIBLE SUPPLIES, PROVIDE TRUEBRO TRU-GUARD PIPE INSULATION KIT ON WASTE AND SUPPLIES UNDER SINK.
P-3H	SECURITY SINK/TOILET COMBO (ADA)	4"	2"	1/2"	1-1/4"	WILLOUGHBY INC. (3696-FA) SERIES 37" WIDE HANDICAP-ADA LIGATURE-RESISTANT COMBO LAVATORY/TOILET FOR USE ON A 90 DEGREE WALL, FLOOR OUTLET, FLOOR MOUNTED, P.C. SHALL PROVIDE WILLOUGHBY INC. (LHFC-PH) LIGATURE-RESISTANT PNEUMATIC PLUSH BUTTON FAUCET, 4" CENTER SET, AND WILLOUGHBY INC. (PML2 / PSL2) DUAL TEMPERATURE LEAD-FREE PNEUMATIC VALVE, 0.5 GPM TO 2 GPM OPTION.
P-4	JANITORS SINK	3"	2"	3/4"	3/4"	FIAT 24"x24" MOLDED STONE MOP BASIN TO GO MODEL MSBIDTQ2424, KIT INCLUDES B30AA FAUCET, B32AA HOSE & BRACKET AND 889CC MOP HANGER, PROVIDE OPTIONAL S.S. WALL GUARDS MODEL MSG2424 WITH CORNER BRACKET, PROVIDE P-TRAP AND CHECK VALVES ON BOTH HOT & COLD WATER SUPPLIES.
P-5H	WATER COOLER BOTTLE FILLER (ADA)	1-1/2"	1-1/2"	-	1/2"	ELKAY (L2STLG8WSLK) EZH2O BOTTLE FILL STATION & VERSATILE BI-LEVEL ADA COOLER, HIGH EFFICIENCY, FILTERED, REFRIGERATED, NO LEAD DESIGN, FLEXI-GUARD STREAMSAVER BUBBLE, SILVER ION ANTIMICROBIAL PROTECTION, BARRIER-FREE ACCESS, 360 WATTS, 6 FULL LOAD AMPS, 120V-3PH-60HZ, PROVIDE WITH P-TRAP, SUPPLY STOP, (ADA MOUNTING HEIGHT)
P-6	FLOOR DRAIN	3"	2"	-	-	ZURN FLOOR DRAIN MODEL 2418B2 WITH TYPE B POLISHED NICKEL BRONZE LIGHT DUTY HEEL PROOF STRAINER, DURA-COATED CAST IRON BODY, COMBINATION INVERTIBLE MEMBRANE CLAMP AND ADJUSTABLE COLLAR WITH SEEPAGE SLOTS, PROVIDE P-TRAP AND TRAP GUARD TRAP SEAL DEVICE.
P-6A	FLOOR SINK	3"	2"	-	-	ZURN TRENCH DRAIN MODEL (---) BRONZE FINISH, PROVIDE P-TRAP AND TRAP GUARD TRAP SEAL DEVICE.
P-6B	SHOWER FLOOR DRAIN	3"	2"	-	-	ZURN FLOOR DRAIN MODEL (---) BRONZE FINISH, PROVIDE P-TRAP AND TRAP GUARD TRAP SEAL DEVICE.
P-6C	LOOKER ROOM TRENCH DRAIN	3"	2"	-	-	ZURN FLOOR DRAIN MODEL (---) S.S. FINISH, PROVIDE P-TRAP AND TRAP GUARD TRAP SEAL DEVICE.
P-7	INTERIOR HOSE BIBB	-	-	-	3/4"	ZURN (Z1349), NARROW WALL HYDRANT, MODERATE CLIMATE, VACUUM BREAKER, KEY OPERATED CONTROL VALVE, SCREWDRIVER OPERATED STOP VALVE.
P-8	EXTERIOR HOSE BIBB	-	-	-	3/4"	ZURN ECOLOTROL MODEL (Z1320), CERAMIC DISC WALL HYDRANT ENCASED, NON-FREEZE, ANTI SIPHON, AUTOMATIC DRAINING.
P-9	SHOWER	-	-	1/2"	1/2"	FLOOR & WALL FINISH BY OTHERS, P.C. SHALL PROVIDE: SYMMONS ORIGIN (S9608PLRTRM-2-0-143-H323-V) SHOWERHAND TRIM: 2.0 GPM FLOW RESTRICTOR, 3-4MODE SHOWER HEAD INTEGRAL DIVERTER VALVE, 36" VERTICAL GRAB BAR/WAND SLIDE, 3-MODE HAND SPRAY, HOSE, 30" SLIDE BAR AND INTEGRAL SERVICE STOPS, PROVIDE SYMMONS (S261XBODY) TEMPOTROL TUBSHOWER VALVE BODY, P.C. SHALL PROVIDE P-TRAP AND ALL NECESSARY PIPING AND VALVES TO INSTALL PER MANUFACTURERS RECOMMENDATIONS.
P-9H	SHOWER	-	-	1/2"	1/2"	FLOOR & WALL FINISH BY OTHERS, P.C. SHALL PROVIDE: SYMMONS ORIGIN (S9608PLRTRM-2-0-143-H323-V) SHOWERHAND TRIM: 2.0 GPM FLOW RESTRICTOR, 3-MODE SHOWER HEAD INTEGRAL DIVERTER VALVE, 36" VERTICAL GRAB BAR/WAND SLIDE, 3-MODE HAND SPRAY, HOSE, 30" SLIDE BAR AND INTEGRAL SERVICE STOPS, PROVIDE SYMMONS (S261XBODY) TEMPOTROL TUBSHOWER VALVE BODY, P.C. SHALL PROVIDE FOLD DOWN SEAT, L-SHAPED GRAB BAR AND VERTICAL GRAB BARS, COORDINATE WITH ARCHTCT. PROVIDE P-TRAP AND ALL NECESSARY PIPING AND VALVES TO INSTALL PER MANUFACTURERS RECOMMENDATIONS.
P-10	DROP-IN SINK (ADA)	2"	1-1/2"	1/2"	1/2"	ELKAY LUSTERTONE CLASSIC ADA COMPLIANT STAINLESS STEEL SINGLE BOWL DROP-IN SINK WITH PERFECT DRAIN MODEL LRAD31226SPD, FEATURES 18 GAUGE 304 STAINLESS STEEL, REAR CENTER DRAIN AND BOTTOM SOUND DEADENING, INCLUDE CHICAGO MANUAL FAUCET MODEL 1102-317ABCP WITH P-CENTERS, SIDE SPRAY WITH HOSE, 6" L-TYPE SWING SPOUT AND 4" VANDAL PROOF WRISTBLADE HANDLES, PROVIDE HEAVY DUTY KEYSUPPLY STOPS, BRAIDED STAINLESS STEEL SUPPLY LINES AND CHROME PLATED CAST BRASS P-TRAP WITH CLEANOUT.
P-11	LAUNDRY WASHER CONNECTION BOX	2"	1-1/2"	1/2"	1/2"	WASHING MACHINE PROVIDED BY OWNER, P.C. TO PROVIDE GUY GRAY FIRE RATED WASHING MACHINE BOX MODEL (FR125SHA) WITH INTEGRAL HAMMER ARRESTERS AND DEEP SEAL TRAP.
P-12	FRIDGE CONNECTION BOX	-	-	-	1/2"	CATEY MODA ICE MACHINE BOX WITH HAMMER ARRESTORS, EXACT MODEL NUMBER SHALL BE DETERMINED BY P.C. TO MATCH PIPING TYPE AND THE CONNECTION REQUIRED.
P-13	SALLY PORT TRENCH DRAIN	4	2	-	-	ZURN TRENCH DRAIN MODEL (---) WITH CATCH BASIN (---) PROVIDE P-TRAP AND TRAP GUARD TRAP SEAL DEVICE.
P-14	3-BAY WASH SINK	2"	2"	3/4"	3/4"	ADVANCE TABCO (---) STAINLESS STEEL 3 COMPARTMENT SINK W/ DRAIN BOARDS, PROVIDE T&S FAUCET (B-0133-12ACBUST), PROVIDE WASTE PIPING, HEAVY-DUTY SUPPLY STOPS, ROUGH-IN AND FINAL CONNECTION.
P-15	DOG WASH STAND	2"	2"	1/2"	1/2"	TO BE DETERMINED

PLUMBING ABBREVIATIONS	
	SANITARY WASTE ABOVE GRADE - NEW
	SANITARY WASTE BELOW GRADE - NEW
	SANITARY VENT - NEW
	DOMESTIC COLD WATER - NEW
	DOMESTIC HOT WATER 140 DEG. - NEW
	DOMESTIC TEMPERED HOT WATER - NEW
	HOT WATER RECIRCULATING - NEW
	GAS PIPING - NEW
	STORM DRAIN ABOVE GRADE - NEW
	STORM DRAIN BELOW GRADE - NEW
	EMERGENCY STORM DRAIN - NEW
	CONDENSATE DRAIN - NEW
	EMERGENCY CONDENSATE DRAIN - NEW
	PRESSURE RUIDING VALVE
	BACK FLOW PREVENTER
	UNION
	DIRECTION OF FLOW
	GAS VALVE
	MECHANICAL GAS VALVE
	BALL VALVE
	CHECK VALVE
	CIRCUIT SETTER
	TEMPERING VELVE
	PIPE DROP
	PIPE RISE
	SHOCK ABSORBER
	END CLEANOUT
	FLOOR CLEANOUT
	WALL CLEANOUT
	P-TRAP PLAN
	HOSE BIBB
	THERMOMETER
	PRESSURE RELIEF VALVES
	HOT WATER RECIRCULATING PUMP

PLUMBING ABBREVIATIONS	
ABV	ABOVE
ACV	AUTOMATIC CONTROL VALVE
AD	AREA DRAIN
ADA	AMERICAN DISABILITIES ACT
A.F.F.	ABOVE FINISHED FLOOR
AW	ACID RESISTANT WASTE PIPING
AV	ACID RESISTANT VENT PIPING
BLUG	BUILDING
BLW	BELOW
BOP	BOTTOM OF PIPE
BTU	BRITISH THERMAL UNIT
C.M.	CONSTRUCTION MANAGER
CL	CLEANOUT
COND	CONDENSATE
COOP	CLEANOUT DECK PLATE
CV	CHECK VALVE
CVG	CAPPED AND VALVED OUTLET
CW	COLD WATER
CLG	CEILING
CONN	CONNECT
CONT	CONTINUATION
DIA	DIAMETER
DN	DOWN
DRU	DRAIN
DRU	DRAINAGE FIXTURE UNIT
DWG	DRAWING
E.C.	ELECTRICAL CONTRACTOR
ECO	END CLEANOUT
EJ DIS	ELECTOR DISCHARGE
EL	ELEVATION
ELEC	ELECTRICAL
ETR	EXISTING TO REMAIN
EXIST	EXISTING
FD	FLOOR DRAIN
FU	FIXTURE UNIT
FT	FEET
FT	GENERAL CONTRACTOR
GAL	GALLONS
GPH	GALLONS PER HOUR
GPM	GALLONS PER MINUTE
HB	HOSE BIBB
HUNG	HUNG CEILING
HP	HORSE POWER
HW	HOT WATER
ID	INSIDE DIAMETER
IN	INDIRECT WASTE
IN	INCH
K.E.S.	KITCHEN EQUIPMENT SUPPLIER
LAV	LAVATORY
MAX	MAXIMUM
MEH	THOUSAND BTUS PER HOUR
M.C.	MECHANICAL CONTRACTOR
MECH	MECHANICAL
MIN	MINIMUM
MTD	MOUNTED
N.T.S.	NOT TO SCALE
OD	OUTSIDE DIAMETER
OS&K	OUTSIDE SCREW & YOKE GATE VALVE
P.C.	PLUMBING CONTRACTOR
PD	PUMP DISCHARGE
PO	PLUGGED OUTLET
PRV	PRESSURE REDUCING VALVE
PSI	POUNDS PER SQUARE INCH
RD	ROOF DRAIN
RHW	RECIRCULATING HOT WATER
RPM	REVOLUTIONS PER MINUTE
RPZ	REDUCED PRESSURE ZONE ASSEMBLY
SA	SHOCK ABSORBER
SAN	SANITARY
SD	SUMP PUMP DISCHARGE
SMV	STUDOR MINI-VENT OR EQUAL
SQ FT	SPECIFICATIONS
TEMP	SQUARE FEET
TEMP	TEMPERATURE
TP	TYPICAL
V	VENT
VB	VENT
VTR	VACUUM BREAKER
WI	WALL CLEANOUT
WCO	WATER THROUGH ROOF
WPD	WATER PRESSURE DROP
WTD	WATER TEMPERATURE DROP
WTR	WATER TEMPERATURE RISE

GENERAL NOTES	
1.	THE CONTRACTOR SHALL BECOME THOROUGHLY FAMILIAR WITH THE PROJECT DOCUMENTS OF ALL TRADES. THE DRAWINGS ARE DIAGRAMMATIC AND SHOW THE GENERAL ARRANGEMENT OF EQUIPMENT AND PIPING. THE CONTRACTOR SHALL COORDINATE THE EXACT LOCATION OF EQUIPMENT AND PIPING INSTALLATION WITH ALL TRADES BEFORE COMMENCING WORK.
2.	THIS CONTRACT SHALL INCLUDE ALL THE NECESSARY PIPING, FITTINGS, TRANSITIONS ETC. AS NECESSARY TO INSTALL PLUMBING SYSTEM, AND TO AVOID ANY CONFLICTS WITH OTHER TRADES AND THE BUILDING STRUCTURE.
3.	IT IS NOT THE INTENT OF THE DRAWINGS TO SHOW INDIVIDUAL BRANCH PIPING TO EACH PLUMBING FIXTURE. ONLY THE BRANCH PIPING TO GROUPS OF FIXTURES IS INDICATED. THE ENTIRE PLUMBING SYSTEM SHALL BE FULLY OPERATIONAL AND READY FOR BENEFICIAL USE BEFORE THE JOB IS CONSIDERED COMPLETE.
4.	DO NOT SCALE DRAWINGS. CONTRACTOR SHALL VERIFY ALL DIMENSIONS & CONDITIONS IN THE FIELD AND SHALL NOTIFY THE ENGINEER IMMEDIATELY OF ANY & ALL DISCREPANCIES.
5.	IT IS NOT INTENDED THAT THE DRAWINGS SHOW EVERY PIPE, FITTING, RISE/DROP OR DETAIL. SYSTEM & COMPONENTS SHALL BE INSTALLED ACCORDING TO THE INTENT AND MEANING OF CONTRACT DOCUMENTS AND IN ACCORDANCE WITH GOOD PRACTICE.
6.	CONTRACTOR IS RESPONSIBLE TO PROVIDE COMPLETE AND OPERATIONAL SYSTEMS WITH FACILITIES AND SERVICES TO MEET REQUIREMENTS INDICATED AND IN ACCORDANCE WITH APPLICABLE CODES AND ORDINANCES.
7.	EQUIPMENT AND COMPONENTS HAVING EQUAL PERFORMANCE CHARACTERISTICS BY OTHER MANUFACTURERS MAY BE SUBSTITUTED, PROVIDED DEVIATIONS IN DIMENSIONS, OPERATION AND OTHER CHARACTERISTICS DO NOT AFFECT DESIGN CONCEPT OR INTENDED PERFORMANCE AS JUDGED BY THE ENGINEER. BURDEN OF PROOF OF EQUALITY OF PRODUCTS IS ON THE CONTRACTOR.
8.	CONTRACTOR IS RESPONSIBLE FOR THE SAFEKEEPING OF HIS OWN PROPERTY ON THE JOBSITE. OWNER ASSUMES NO RESPONSIBILITY FOR THE PROTECTION OF PROPERTIES AGAINST FIRE, THEFT AND OTHER UNDESIRABLE CONDITIONS.
9.	CONTRACTOR IS RESPONSIBLE TO PROPERLY PROTECT OWNER'S PROPERTY AND EQUIPMENT FROM INJURY, AND DAMAGE TO SAME SHALL BE REPLACED BY CONTRACTOR.
10.	CONTRACTOR IS TO CLEAN JOB SITE DAILY AND REMOVE FROM THE PREMISES ANY DIRT AND DEBRIS CAUSED BY THE PERFORMANCE OF THE WORK INCLUDED IN THIS CONTRACT.
11.	ALL WORK TO BE PERFORMED IN A CLEAN AND WORKMANLIKE MANNER. CARE SHALL BE EXERCISED TO MINIMIZE ANY INCONVENIENCE OR DISTURBANCE TO SURROUNDING AREAS OF THE BUILDING WHICH ARE TO REMAIN IN OPERATION. ISOLATE CONSTRUCTION AREAS BY MEANS OF TEMPORARY PARTITIONS AND/OR TAPPS TO KEEP DUST AND DIRT WITHIN WORK AREA.
12.	CONTRACTOR IS RESPONSIBLE TO PROPERLY SECURE AREAS OF CONSTRUCTION AT THE END OF EACH WORKING DAY.
13.	EQUIPMENT AND PIPING TO BE INSTALLED IN ACCORDANCE WITH SEISMIC REQUIREMENTS OF THE INTERNATIONAL BUILDING CODE.
14.	CONTRACTOR IS RESPONSIBLE TO COORDINATE WITH ALL OTHER TRADES.
15.	ALL EQUIPMENT SUPPORTS AND PIPE HANGERS TO BE CONNECTED FROM THE BUILDING STRUCTURE.
16.	ALL PENETRATIONS THRU RAISED WALLS, FLOORS AND CEILINGS SHALL BE FIRESTOPPED AND SEALED TO MAINTAIN RATINGS. REFER TO SPECIFICATION SECTION ON "FIRESSTOPPING".
17.	PROVIDE SHUT-OFF VALVES AT ALL BRANCH PIPING TAKE-OFFS.
18.	INSULATE ALL PLUMBING SERVICES AS INDICATED IN THE SPECIFICATIONS.
19.	NO PIPING SHALL BE INSTALLED WITHIN STAIRS, STAIR WALLS, ELEVATOR MACHINE ROOMS, TRANSFORMERS VAULTS, ELECTRICAL ROOMS OR OVER ELECTRICAL PANELS/EQUIPMENT. ONLY DEDICATED PLUMBING PIPING WILL BE ALLOWED WITHIN EACH OF THE SPACES INDICATED ABOVE. COORDINATE THE LOCATION OF ALL PIPING WITH ALL OTHER TRADES AND ADJUST AS NECESSARY. ANY AND ALL PLUMBING PIPING REQUIRED WITHIN ANY OF THESE SPACES SHALL HAVE CONDENSATE TYPE Drip PANS INSTALLED BELOW ALL PIPING WITH LEAK DETECTION BY P.C. AND CONNECTED TO BUILDINGS MANAGEMENT SYSTEM IF APPLICABLE.
20.	PIPE ALL CONDENSATE DRAINS FROM MECHANICAL EQUIPMENT, BY GRAVITY TO FIXED AIR GAP FITTING. EACH CONDENSATE DRAIN SHALL BE TRAPPED AT THE EQUIPMENT DRAIN OUTLET. COORDINATE EXACT LOCATION WITH THE HVAC CONTRACTOR AND ADJUST AS NECESSARY.
21.	COORDINATE THE EXACT LOCATION OF ALL UNDERGROUND EXISTING & NEW UTILITIES EXITING ENTERING THE BUILDING WITH THE SITE CONTRACTOR AND UTILITY DRAWINGS. COORDINATE ALL FOUNDATION WALL PENETRATIONS AND INVERT ELEVATIONS WITH THE GENERAL CONTRACTOR AND/OR CONSTRUCTION MANAGER.
22.	ALL INDIRECT WASTE DRAINS SHALL BE PIPED TO FLOOR DRAINS, FLOOR SINKS, FUNNELS OR A FIXED AIR GAP FITTING AND DISCHARGE THROUGH AN AIR GAP OR TO A SINK DRAIN TAILPIECE.
23.	CONTRACTOR SHALL BE RESPONSIBLE FOR ALL ELBOWS, TEES, DROPS AND MISCELLANEOUS PIPING DUE TO ELEVATION CHANGES, OBSTRUCTIONS AND COORDINATION WITH OTHER TRADES, ETC. TO INSTALL A COMPLETE AND FUNCTIONING PLUMBING SYSTEM.
24.	CONTRACTOR SHALL PROVIDE ISOLATION VALVES ON ALL HOT, COLD AND RECIRCULATING HOT WATER BRANCHES IN ACCESSIBLE AREAS ONLY. PROVIDE ACCESS PANELS AS REQUIRED.
25.	CONTRACTOR IS RESPONSIBLE TO CREATE AND MAINTAIN AS-BUILT DOCUMENTS FOR SUBMISSION AND APPROVAL.
26.	CONTRACTOR IS RESPONSIBLE TO PRODUCE FOR REVIEW AND APPROVAL COORDINATION DRAWINGS OF ALL TRADES BEFORE COMMENCEMENT OF INSTALLATION. ANY INSTALLATION WORK COMPLETED BEFORE REVIEW AND APPROVAL OF COORDINATION DRAWINGS IS AT CONTRACTORS OWN RISK AND CHANGE ORDERS SHALL NOT BE ENTERTAINED FOR ANY REQUIRED REWORK.



ARTIFEX
architects & engineers

175 Exchange St.
Bangor, Maine 04401
Phone: 207-974-3028
www.artifexae.com



**MANN
WOODWARD
STUDIOS**

ARCHITECTURE + MASTER PLANNING

8098 SANDPIPER CIR, SUITE H
NOTTINGHAM, MD 21236

410-344-1460
info@mwsarch.com
www.mwsarch.com

CONSULTANT:

DuBois & King Inc.

Building Services Division
Bedford, NH
ME/FPF Engineers
603.444.6578
Project #530419

SEAL:

CITY OF CARIBOU, MAINE
CARIBOU POLICE DEPARTMENT

PROJECT NUMBER: 21-000

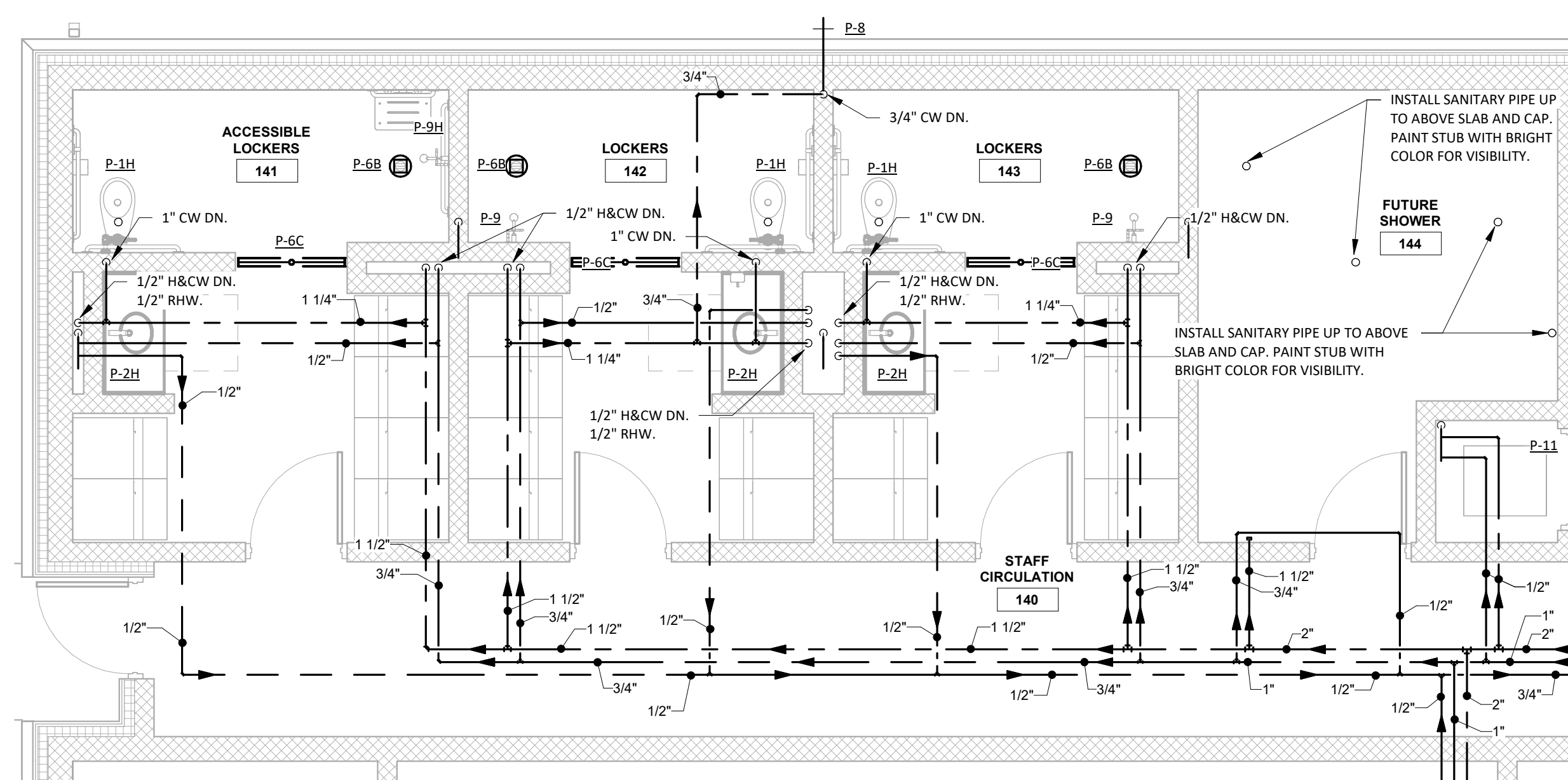
SUBMISSION
PROGRESS

ORIGINAL ISSUE
11.06.24

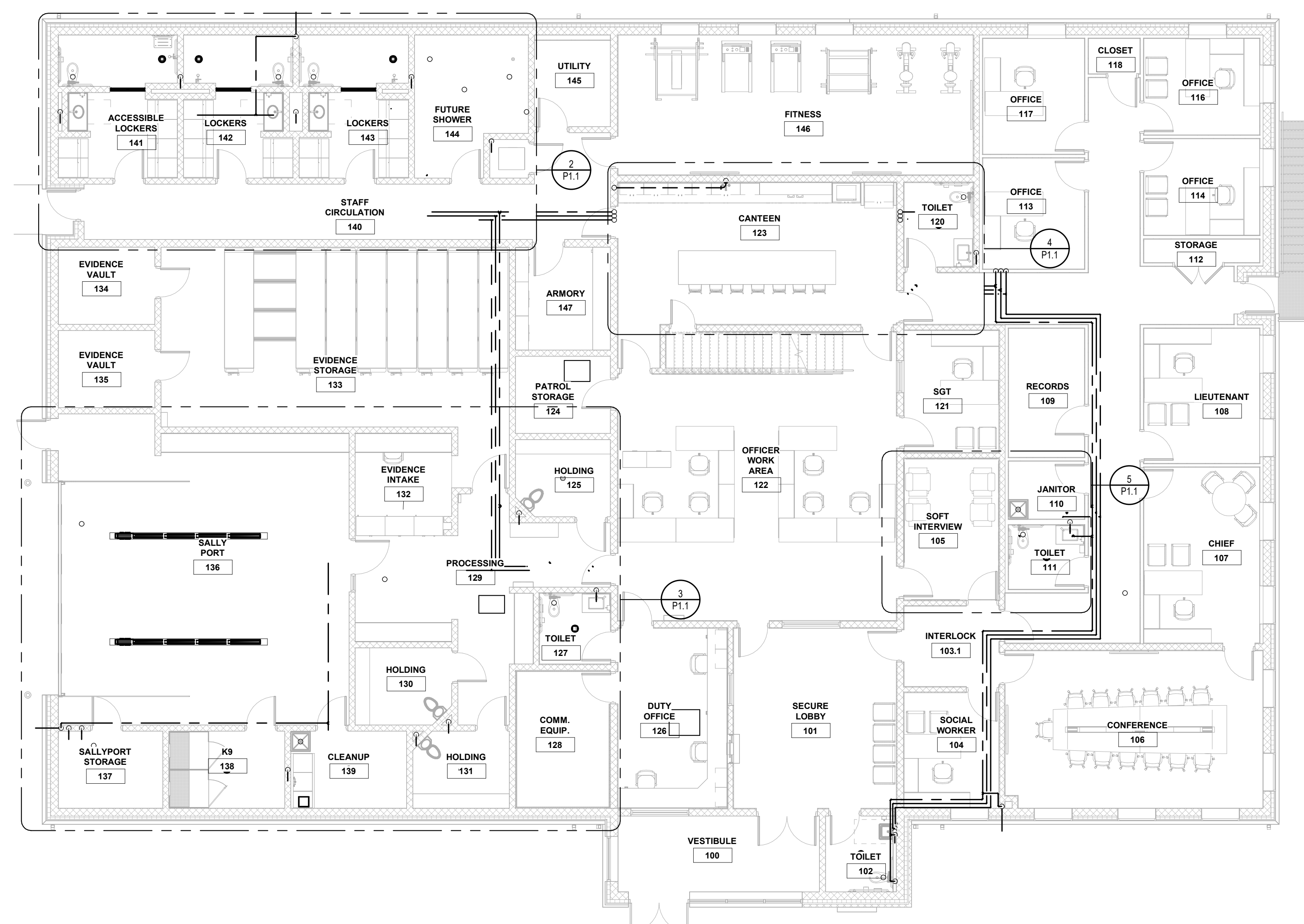
SHEET REVISION SCHEDULE:
No. DATE

LEGENDS & NOTES

SHEET

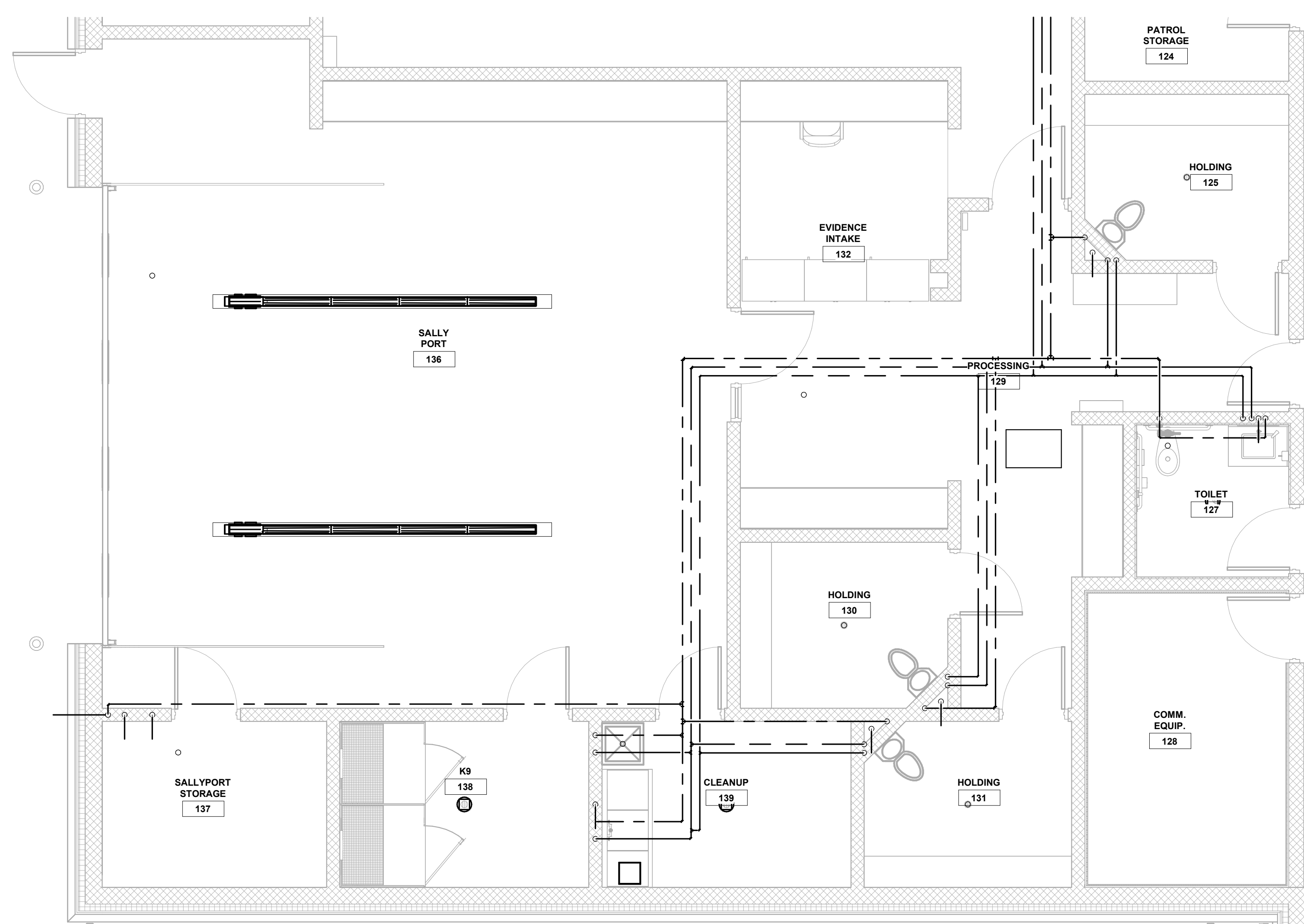


EVIDENCE VAULT **FIRST FLOOR PART PLAN - LOCKER ROOMS - PLUMBING**



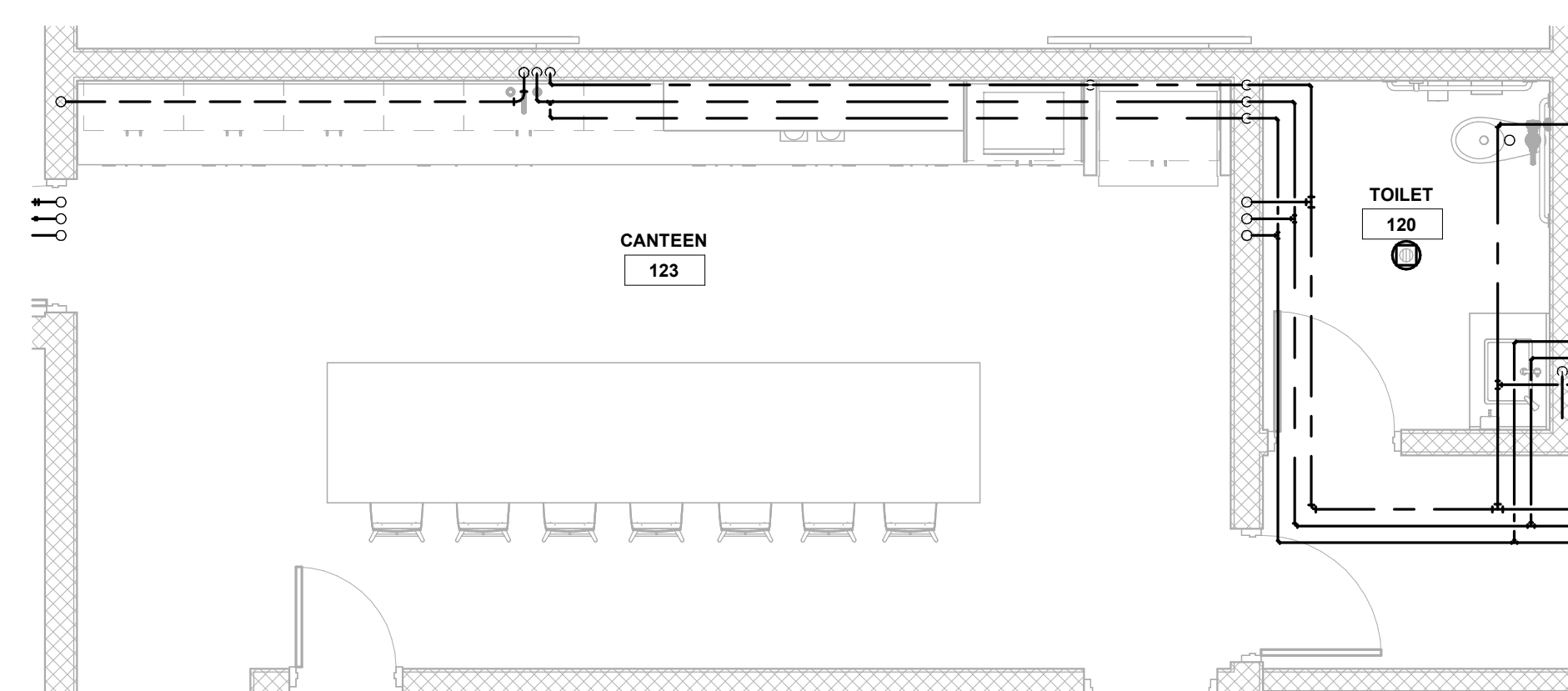
FIRST FLOOR PLAN - PLUMBING

SCALE: 1/8" = 1'-0"



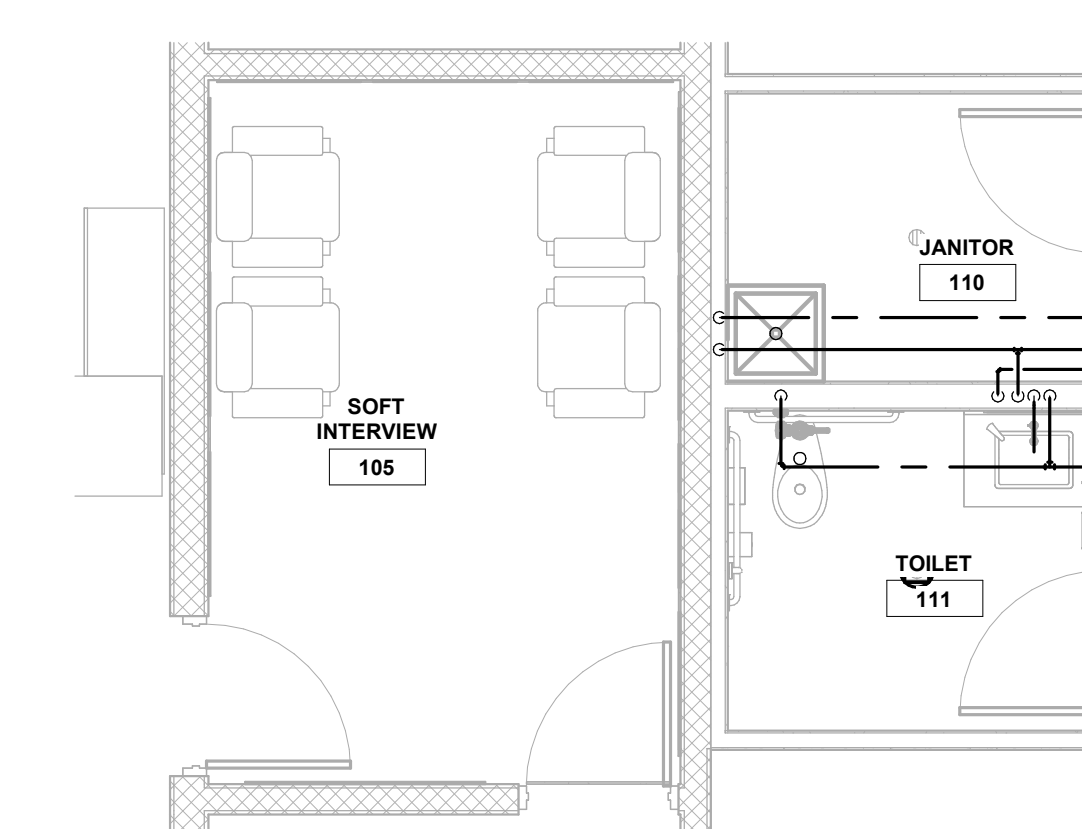
FIRST FLOOR PART PLAN - SALLY PORT - PLUMBING

SCALE: 1/4" = 1'-0"



FIRST FLOOR PART PLAN - CANTEEN - PLUMBING

SCALE: 1/4" = 1'-0"



FIRST FLOOR PART PLAN - JANITOR 110 - PLUMBING

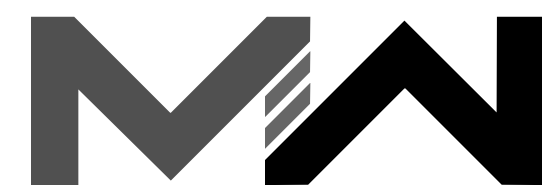
SCALE: 1/4" = 1'-0"

PRELIMINARY - NOT FOR CONSTRUCTION



ARTIFEX
architects & engineers

175 Exchange St.
Bangor, Maine 04401
Phone: 207-974-3028
www.artifexae.com



STUDIOS

ARCHITECTURE + MASTER PLANNING

8098 SANDPIPER CIR, SUITE H
NOTTINGHAM, MD 21236

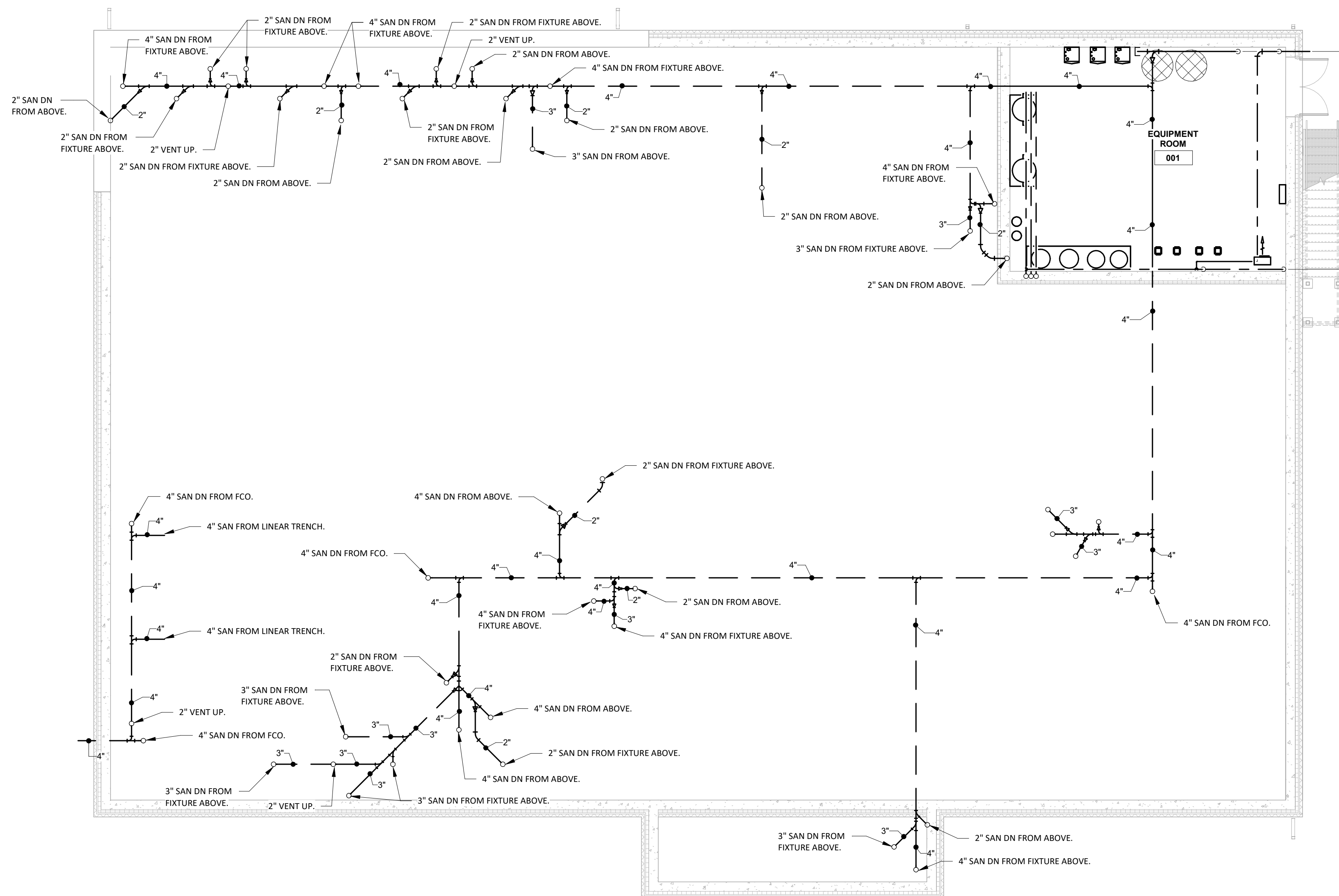
410-344-1460
INFO@MWSARCH.COM
WWW.MWSARCH.COM

CONSULTANT:



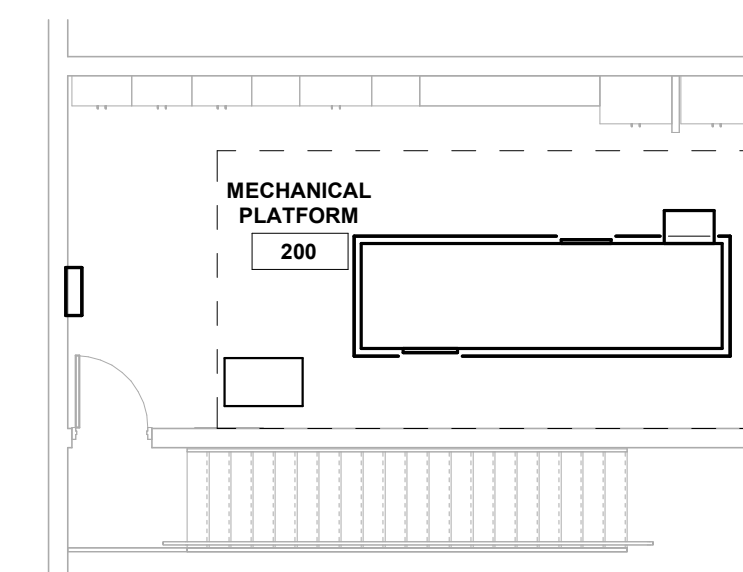
Building Services Division
Bedford, NH
ME/PFP Engineers
603.444.6578
Project #530419

SEAL:



BASEMENT FLOOR PLAN - PLUMBING

SCALE: 1/8" = 1'-0"



MEZZANINE FLOOR PLAN - PLUMBING

SCALE: 1/8" = 1'-0"

CITY OF CARIBOU, MAINE
CARIBOU POLICE DEPARTMENT

PROJECT NUMBER: 21-000

SUBMISSION
PROGRESS

ORIGINAL ISSUE
11.06.24

SHEET REVISION SCHEDULE:
No. DATE

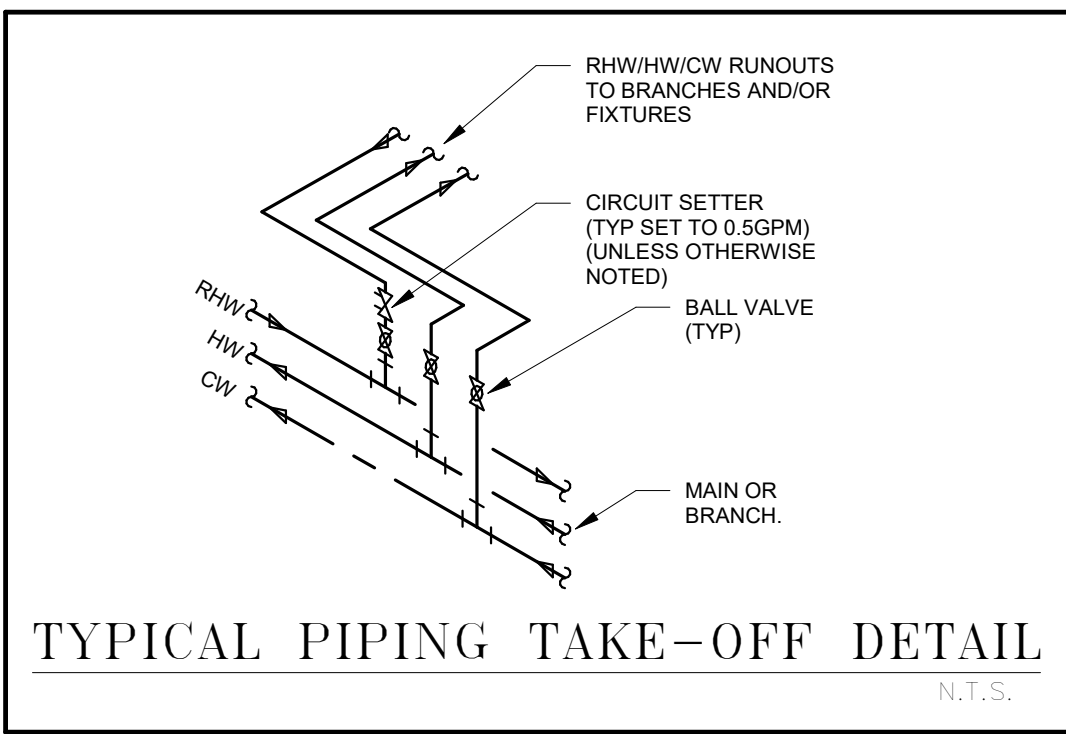
BASEMENT & MEZZANIE PLAN -
PLUMBING

SHEET

PRELIMINARY - NOT FOR CONSTRUCTION

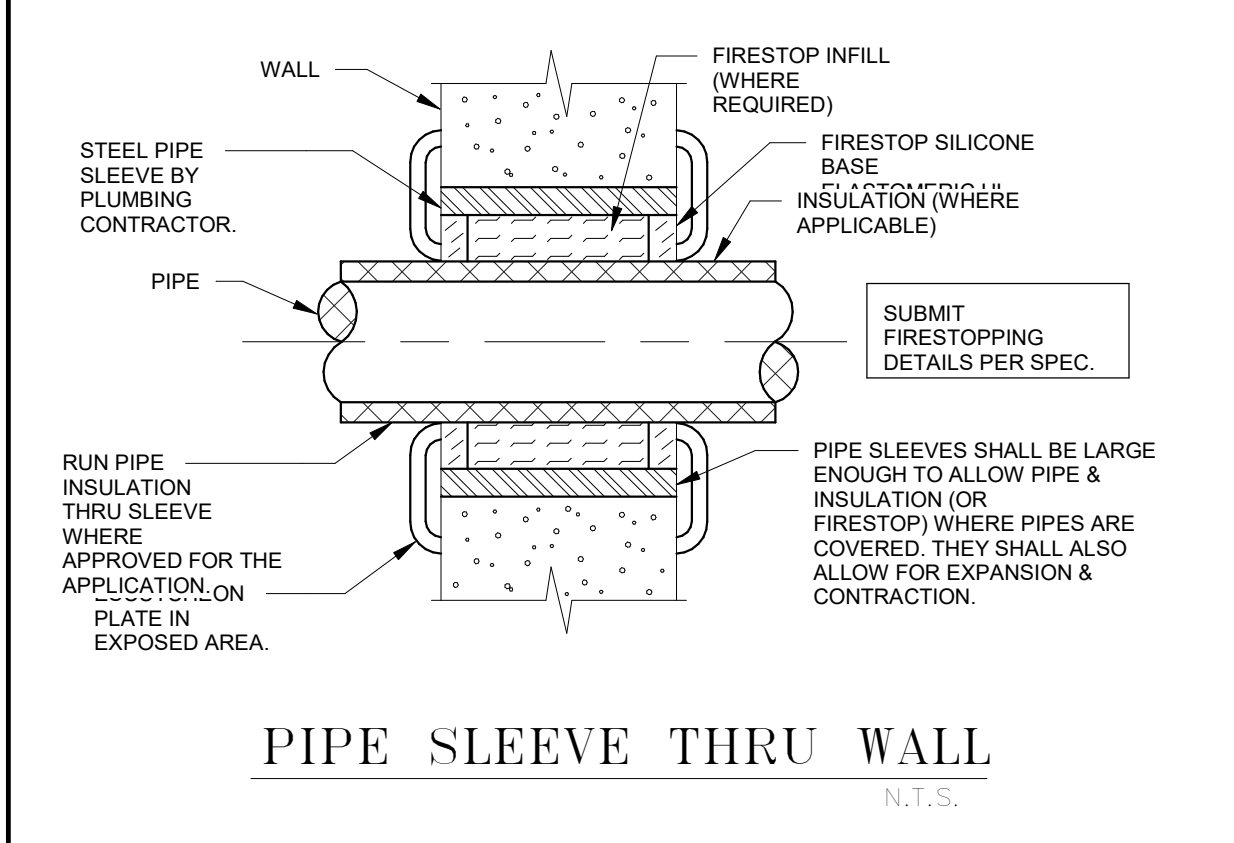
P1.2

3/6/2025 10:50:09 AM



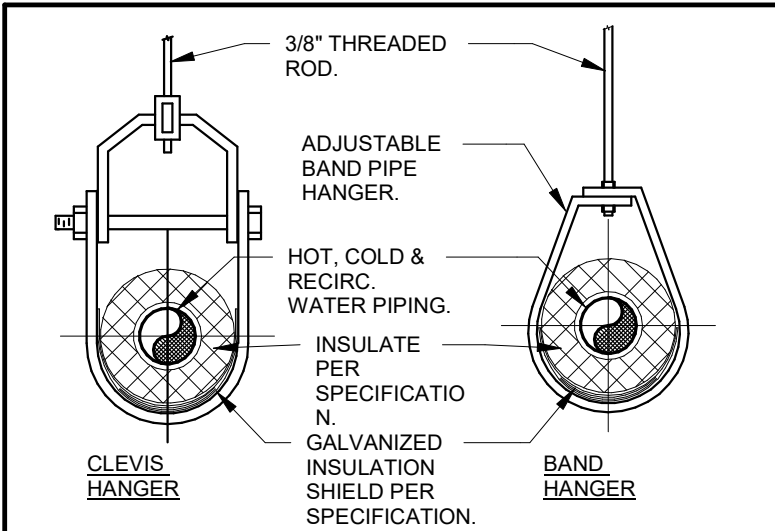
TYPICAL PIPING TAKE-OFF DETAIL

N.T.S.



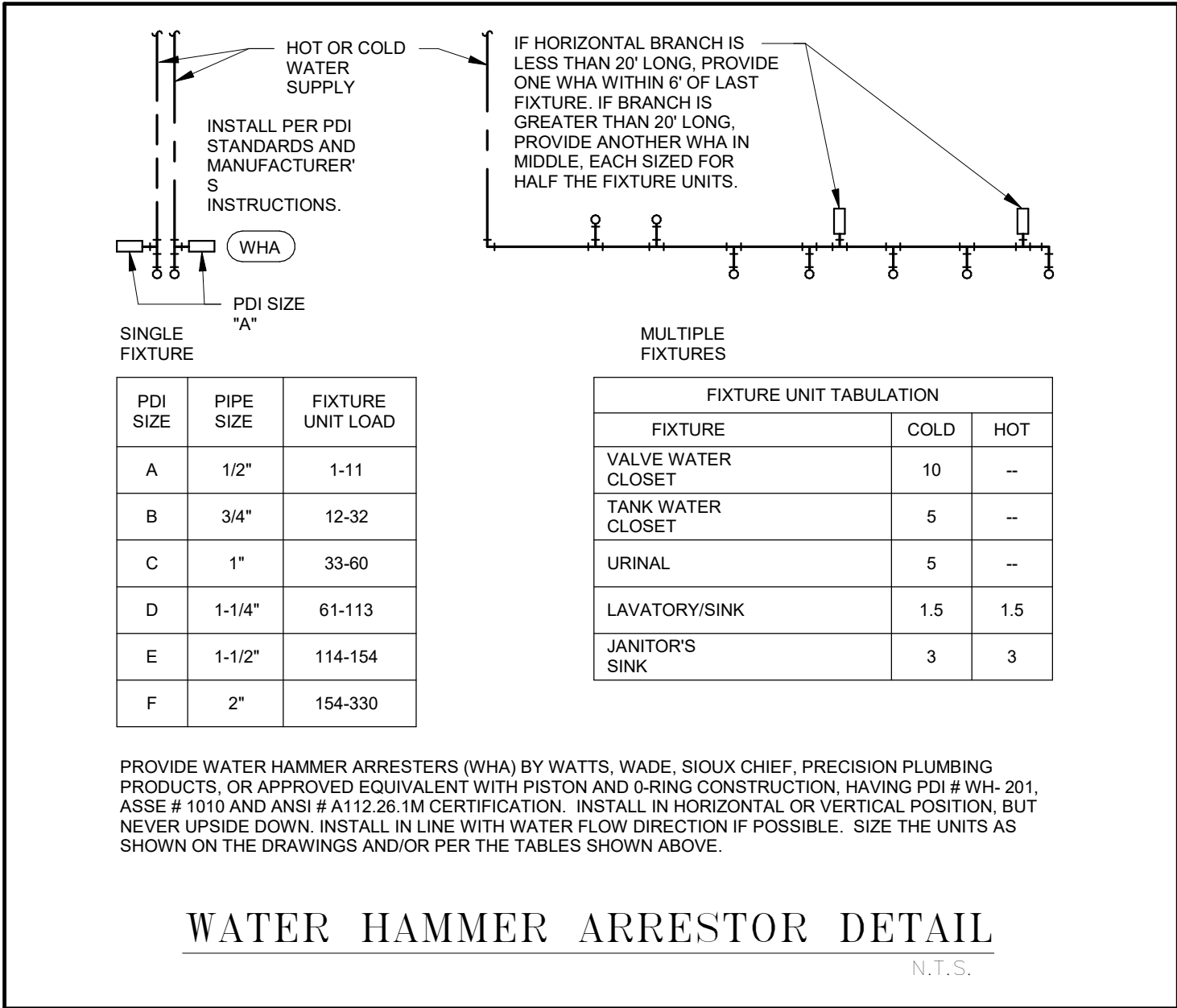
PIPE SLEEVE THRU WALL

N.T.S.



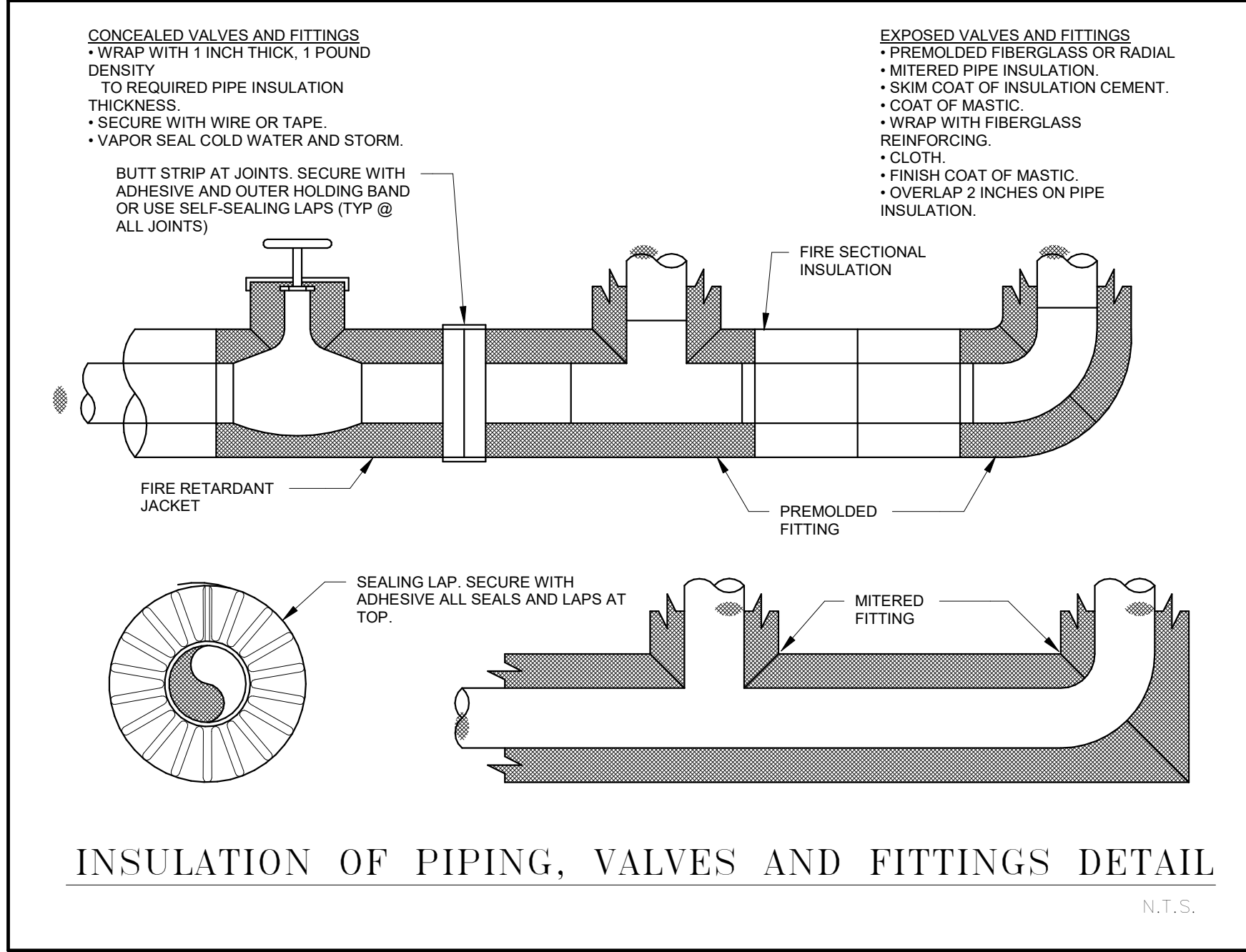
TYPICAL PIPE HANGERS

N.T.S.



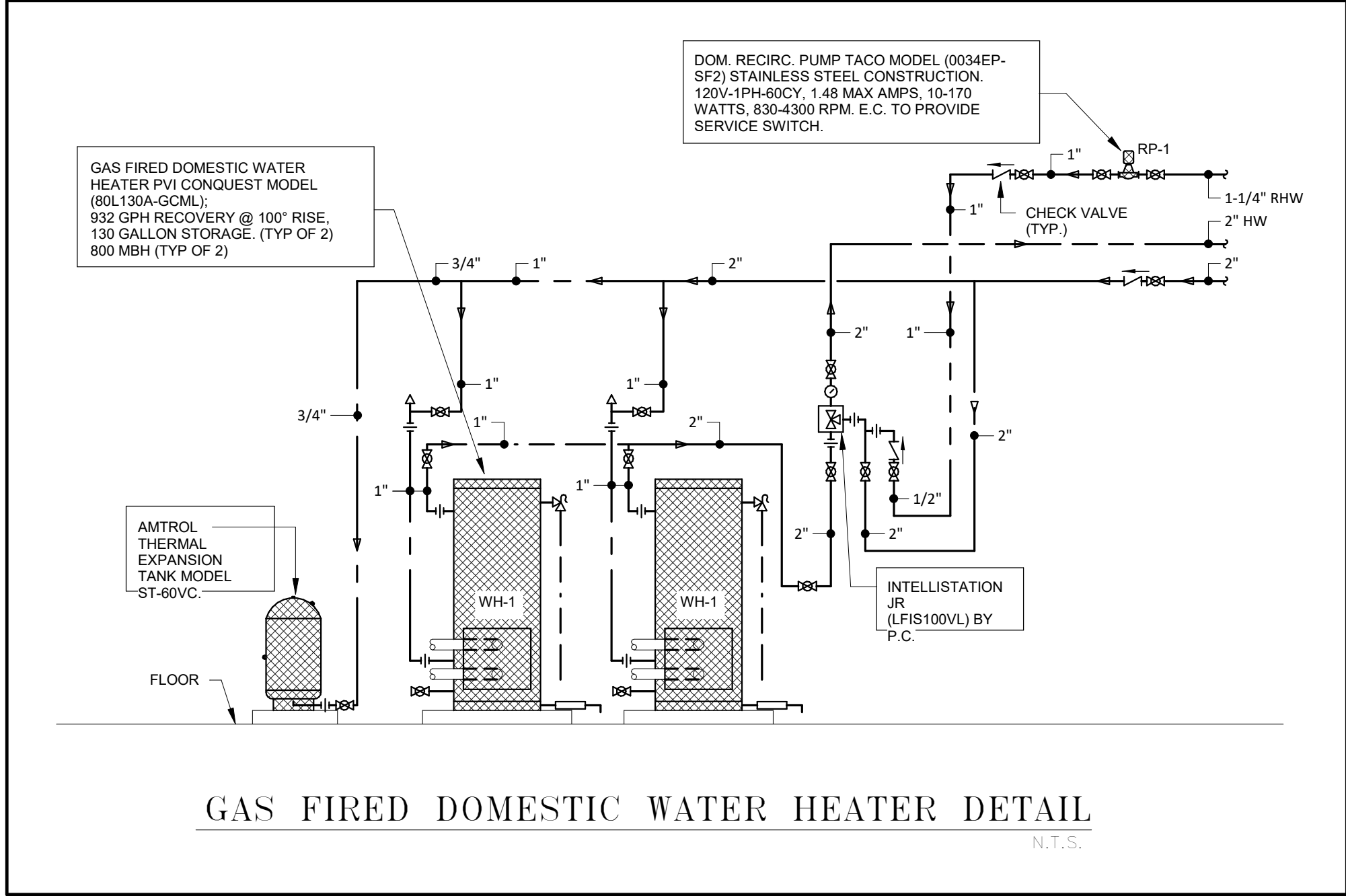
WATER HAMMER ARRESTOR DETAIL

N.T.S.



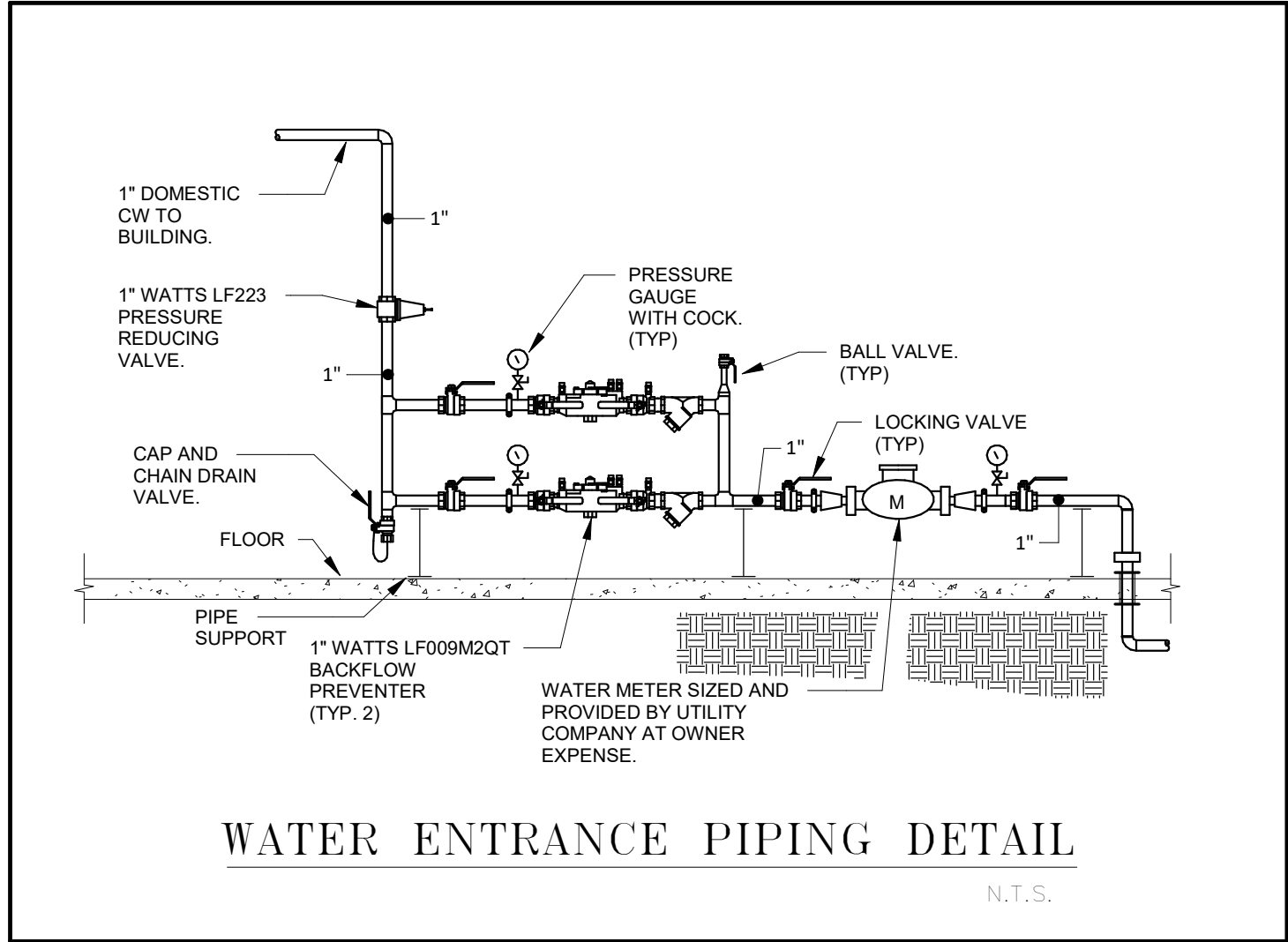
INSULATION OF PIPING, VALVES AND FITTINGS DETAIL

N.T.S.



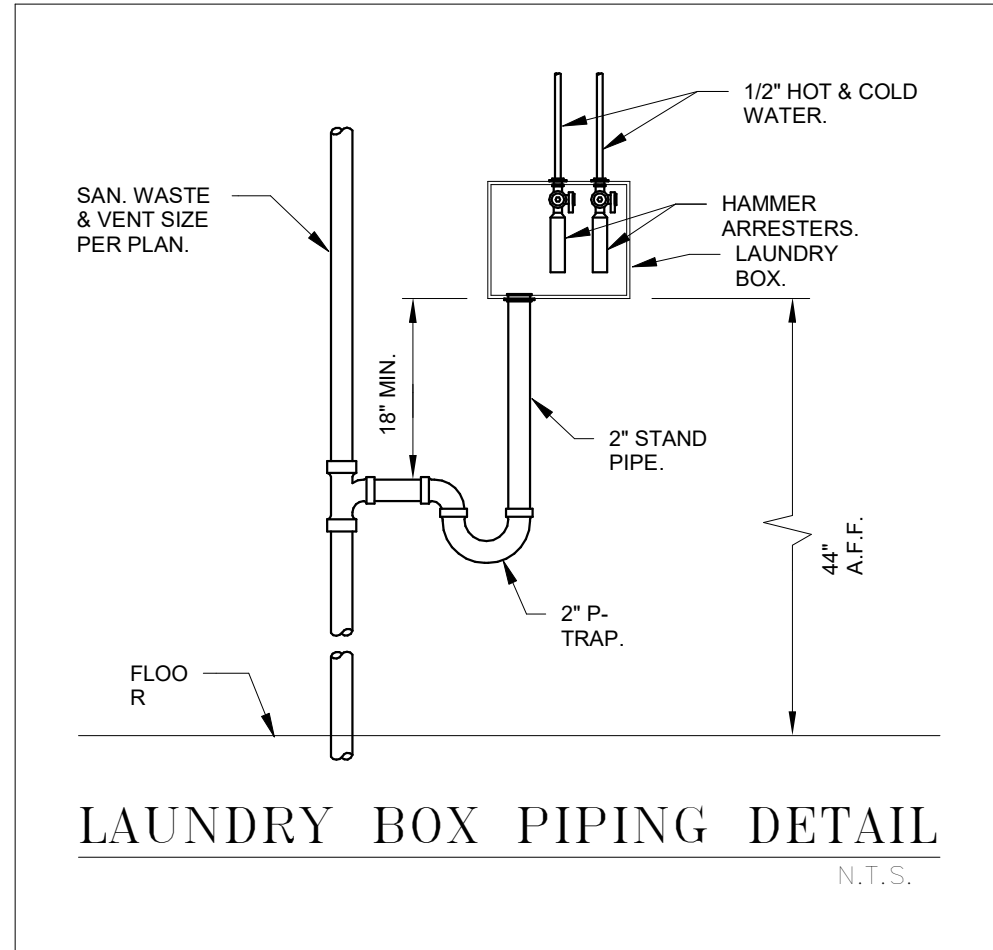
GAS FIRED DOMESTIC WATER HEATER DETAIL

N.T.S.



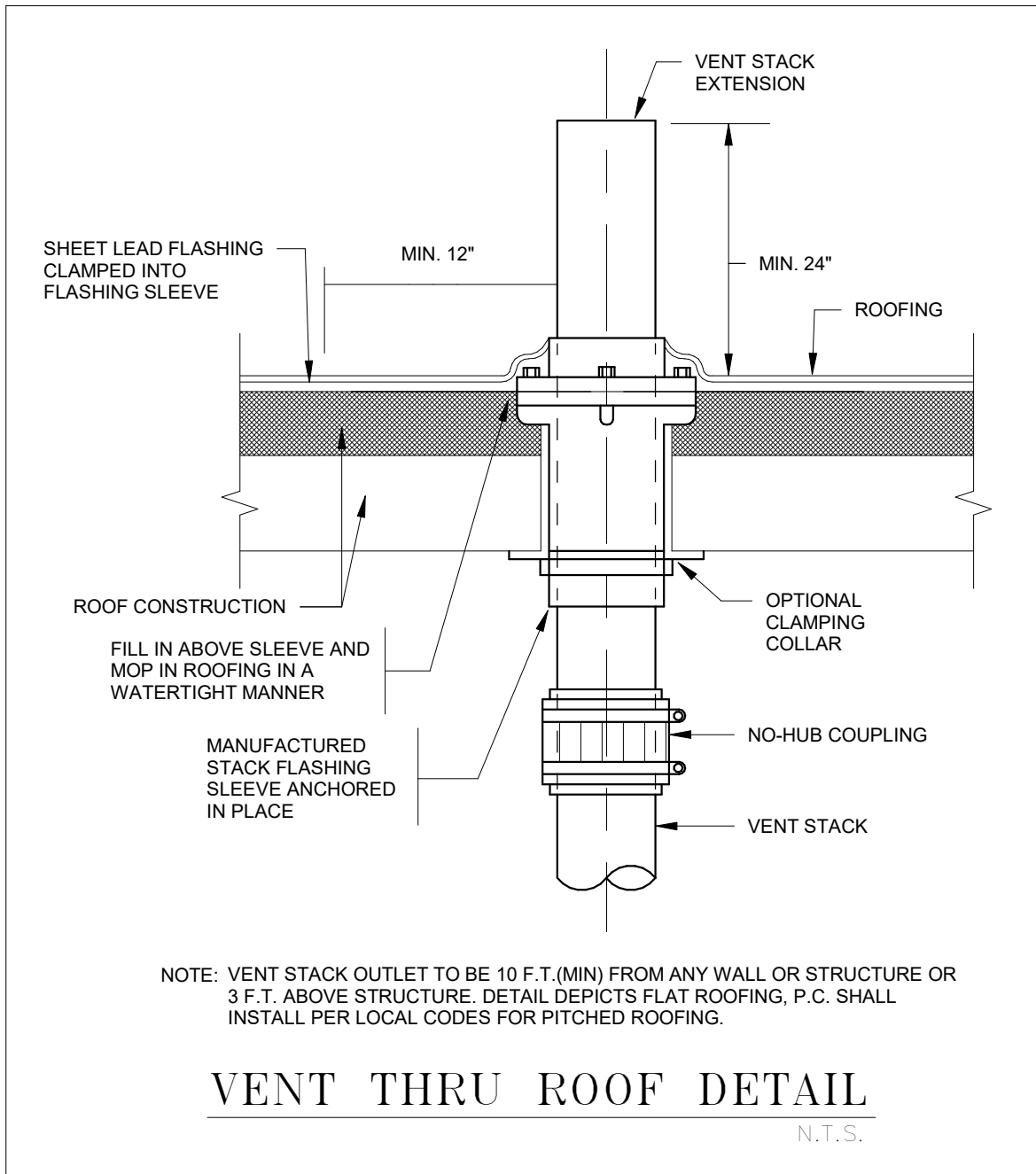
WATER ENTRANCE PIPING DETAIL

N.T.S.



LAUNDRY BOX PIPING DETAIL

N.T.S.



VENT THRU ROOF DETAIL

N.T.S.



ARTIFEX
architects & engineers

175 Exchange St.
Bangor, Maine 04401
Phone: 207-974-3028
www.artifexae.com



ARCHITECTURE + MASTER PLANNING

8088 SANDPIPER CIR, SUITE H
NOTTINGHAM, MD 21236

410-344-1460
INFO@MWSARCH.COM
WWW.MWSARCH.COM

CONSULTANT:



Building Services Division
Bedford, NH
ME/FP Engineers
603.444.6578
Project #530419

SEAL:

CITY OF CARIBOU, MAINE
CARIBOU POLICE DEPARTMENT

PROJECT NUMBER: 21-000

SUBMISSION
PROGRESS

ORIGINAL ISSUE
11.06.24

SHEET REVISION SCHEDULE:
No. DATE

PLUMBING DETAILS

SHEET

PRELIMINARY - NOT FOR CONSTRUCTION

P5.1

3/6/2025 10:50:10 AM